

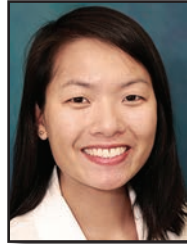
# Dignity Health Family Medicine Residency & Sports Medicine Fellowship at Northridge

July 2016 – June 2017

*1<sup>st</sup>  
year  
Residents*



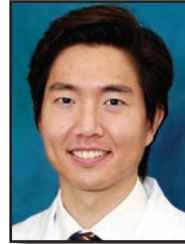
**Christopher Gomez, M.D.**  
Keck School of Medicine of the University of Southern California



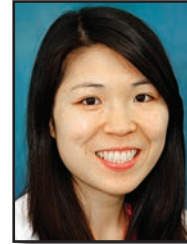
**Mary Hoang, D.O.**  
Arizona College of Osteopathic Medicine of Midwestern University



**Chelsey Kahanowitch, D.O.**  
Lincoln Memorial University-DeBusk College of Osteopathic Medicine



**Stephen Lee, M.D.**  
Indiana University School of Medicine



**Janet Tin Yun Li, D.O.**  
Western University of Health Sciences/College of Osteopathic Medicine of the Pacific



**Matthew Melchione, D.O.**  
A.T. Still University of Health Sciences School of Osteopathic Medicine in Arizona

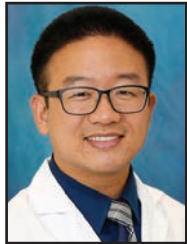


**Minh Nguyen, D.O.**  
Western University of Health Sciences/College of Osteopathic Medicine of the Pacific



**Tara Sarabakhsh, D.O.**  
Western University of Health Sciences/College of Osteopathic Medicine of the Pacific

*2<sup>nd</sup>  
year  
Residents*



**Jin Brian Choi, D.O.**  
A.T. Still University of Health Sciences School of Osteopathic Medicine in Arizona



**Wendy Mak, D.O.**  
Western University of Health Sciences/College of Osteopathic Medicine of the Pacific



**Mario Nawaz, M.D.**  
Indiana University School of Medicine



**Sofia Radillo, M.D.**  
Meharry Medical College



**Angela Sohn, D.O.**  
Western University of Health Sciences/College of Osteopathic Medicine of the Pacific



**Natalia Sviricic, D.O.**  
Western University of Health Sciences/College of Osteopathic Medicine of the Pacific

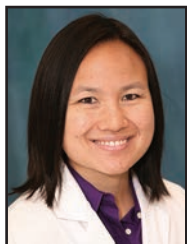


**Debbie Wang, D.O.**  
Touro University Nevada College of Osteopathic Medicine

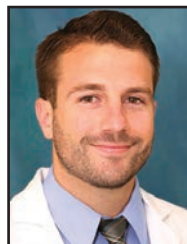


**Gloria Monsalve White, M.D.**  
Universidad Industrial de Santander Escuela de Medicina / UCLA IMG

*3<sup>rd</sup>  
year  
Residents*



**Chau Bui, D.O.**  
Touro University College of Osteopathic Medicine



**Christopher Dan, D.O.**  
Western University of Health Sciences/College of Osteopathic Medicine of the Pacific



**Sevag Kalinjian, D.O.**  
Touro University College of Osteopathic Medicine



**David Kay, D.O.**  
Western University of Health Sciences/College of Osteopathic Medicine of the Pacific



**Ying Mei, D.O.**  
Touro University College of Osteopathic Medicine



**Diana Naderi, M.D.**  
Chicago Medical School at Rosalind Franklin University of Medicine & Science



**Samra Rashid, D.O.**  
Western University of Health Sciences/College of Osteopathic Medicine of the Pacific



**Manessa Shaw, D.O.**  
Western University of Health Sciences/College of Osteopathic Medicine of the Pacific



**Jaqueline Lopez, M.D.**  
Sports Medicine Fellow  
Scripps Mercy Hospital  
Chula Vista  
Family Medicine Residency

**Chief Resident**

**Chief Resident**

# **NORTHRIDGE FAMILY MEDICINE RESIDENCY PROGRAM**

## ***Affiliated with the David Geffen School of Medicine at UCLA***

18406 Roscoe Boulevard • Northridge, California 91325

(818) 993-4054 • [www.northridgefp.org](http://www.northridgefp.org)

### **PROGRAM BACKGROUND & PHILOSOPHY**

- Established in 1976 with over 200 graduates practicing in Southern California and across the nation.
- Economically stable unopposed program with strong hospital medical staff & administration support.
- Committed to the education of outstanding family physicians.
- Dedicated to accessible quality health care for all and outreach to the underserved population in our community.
- Full ACGME Accreditation received March 2012.**

### **THE COMMUNITY**

- Ethnically diverse urban community located in the heart of the San Fernando Valley, 30 minutes from the beach and downtown Los Angeles.
- Close to all amenities: restaurants, shopping malls, amusement parks, Universal Studios and Citywalk, Dodger Stadium, J. Paul Getty Museum & more.
- Residents enjoy an active Southern California lifestyle with numerous activities.
- California State University at Northridge, UCLA & USC are in the area.

### **THE HOSPITAL**

- Northridge Hospital Medical Center is a major primary and specialty care facility.
- Exposure to a full scope of surgical, medical, pediatric, obstetrical & psychiatric care including pediatric intensive care, perinatology, and acute rehabilitative medicine.
- Excellent hospital ancillary staff to provide all the support services of a private hospital.

### **CURRICULUM**

- Three-year residency program – each year divided into 16 rotation blocks.
- Excellent inpatient family medicine training.
- Strong pediatric & obstetrical experiences in both inpatient and outpatient settings.
- Specialty rotations include geriatrics, surgery, emergency medicine, orthopedics, gynecology, community medicine, dermatology, ENT, urology, ophthalmology, and sports medicine. Elective time: 5 blocks.

### **MEDICAL STUDENT ROTATIONS**

- Inpatient sub-internships and outpatient electives available for 4<sup>th</sup> year medical students from LCME and AOA accredited medical schools.
- Popular site for 3<sup>rd</sup> year Family Medicine Rotation for students at UCLA School of Medicine.

### **THE FAMILY PRACTICE CENTER**

- Busy medical office with a procedure room, ultrasound room, video capabilities & supportive staff bilingual in English & Spanish.
- Health educator and nutritionist are available for residency patients as part of residency teaching.
- Exposure to a wide range of clinical presentations & diagnoses for all age groups from newborns to elderly.
- Supportive and accessible preceptors with resident/faculty ratio of 4:1 or less.
- Easy access to medical text and on-line resources during patient care. Large conference room for didactics.
- Teaching clinics by specialists in ambulatory surgery, neurology, dermatology, podiatry, pediatric cardiology, fracture care & gynecology available for residency patients.
- Electronic Medical Records; laptops issued to each resident.

### **RESIDENT REMUNERATION & BENEFITS**

- 2015-2016 Salaries – 1: **\$50,194**; 2: **\$53,009**; 3: **\$59,012**.
- Generous vacation time, 4 weeks each year**, with additional 1 week paid conference time in 3<sup>rd</sup> year.
- \$1,000 conference stipend for PGY3.
- All residents receive \$400 annual education fund.
- All meals provided at hospital free of cost** in a restaurant-style cafeteria.
- Medical Liability insurance.
- Medical, dental, vision care and disability insurance.
- Tax Saving Annuity with matching Dignity Health funds program.
- PALS and NRP certification.
- AAFP membership.
- A resident house with private sleeping rooms & all the comforts of a home including a full kitchen, living room area and 1½ baths.
- Child care center on campus.
- Annual Retreat for residents, families & faculty to facilitate camaraderie & discuss potential changes in the program.

**Contact Pamela M. Davis, M.D., Program Director, at [pamela.davis@dignityhealth.org](mailto:pamela.davis@dignityhealth.org)**