

## Residency Program Pass Rates 2011 - 2013

This report contains information about the internal medicine certifying examination performance of programs accredited by the Accreditation Council for Graduate Medical Education (ACGME). For each residency program listed in the following pages, the American Board of Internal Medicine (ABIM) reports the cumulative pass rate for the 2011 to 2013 certifying examinations in internal medicine.

### **What data are reported?**

For each program, this report lists the number of candidates that took the examination, the number who passed, the percent that passed, and the 95% confidence interval. The confidence interval identifies the range within which the program pass rate would fall 95 out of 100 times if we repeatedly tested its residents. For example, a program with a 75% pass rate and a confidence interval of  $\pm 15\%$  has very high (95%) assurance that its "true" pass rates are neither lower than 60% nor higher than 90%. The confidence intervals must be taken into account in interpreting these data. In making comparisons between individual programs, the range of pass rates defined by the confidence intervals should be compared rather than the specific percent passing in each program. For your information, the distribution of program pass rates is included at the end of the pass rate listing.

### **Which residents are included in the calculation of a program's pass rate?**

Candidates are included in the computation of a program pass rate if they meet four conditions.

1. They are first takers of the 2011, 2012, or 2013 certifying examinations in internal medicine (repeat takers are excluded).
2. They completed training in the year of or the year before the first attempt (i.e., a candidate who took the 2013 certifying examination for the first time must have completed training in 2012 or 2013).
3. The final year of training is in internal medicine or a combined training program such as pediatrics and medicine.
4. Candidates must have received their satisfactory final evaluation of clinical competence from the training program.

### **Which programs are included in this report?**

Programs are included in this report only if they are currently accredited by the ACGME; however, pass rates are reported only if a program has at least ten (10) residents who meet the above criteria. Programs with fewer than ten residents meeting these criteria are included if they were accredited from July 1, 2008 through June 30, 2013 (i.e., long enough to produce residents who met the training requirements for the 2011, 2012, and 2013 examinations). For these programs only the number of examinees is reported.

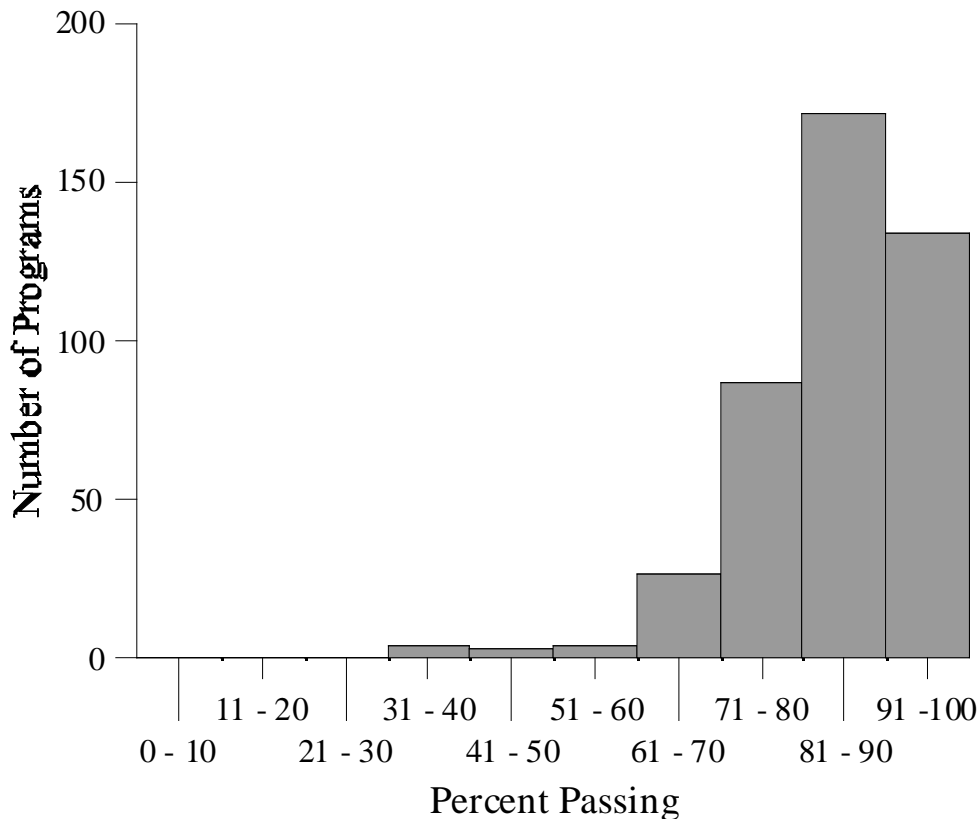
## What are the limitations of the data?

Many factors influence a program's pass rate. Some are directly attributable to the program such as curriculum, faculty, and resident selection criteria. Others relate to examinees and/or the examination and are beyond the control of the program. Examinee factors include work habits during training and preparation for the examination, while examination factors include the specific content sampled in any year's test.

Other limitations may also affect the precision of these data. First, the sizes of the confidence intervals vary with the number of trainees so caution should be exercised in interpreting the pass rates, especially for programs with fewer than 25 examinees. Second, if significant changes in the program have occurred within the three-year period, pass rates may not fully reflect these changes. Third, data are presented at the title program level as listed in the ACGME *Graduate Medical Education Directory* and therefore may include residents trained in affiliated hospitals/institutions.

*These data can only be properly understood in the context of statistical explanations provided above.*

**ACGME Accredited Programs with at Least Ten First-Time Takers  
Over the Three-Year Period**



Number of Programs = 434  
Mean = 85%  
Standard Deviation (SD) = 11%

Mean + 1 SD = 96%  
Mean - 1 SD = 74%  
Mean - 2 SDs = 63%  
Mean - 3 SDs = 52%

## Alabama

Program Name City and State	Number of Examinees	Number Passing	Percent Passing	95% Confidence Interval
Baptist Health System Program Birmingham, AL	25	18	72	60-84
University of Alabama Medical Center (Montgomery) Program Montgomery, AL	18	16	89	76-100
University of Alabama Medical Center Program Birmingham, AL	110	97	88	78-98
(Combined Internal Medicine-Pediatrics)	13	12	92	78-100
University of South Alabama Program Mobile, AL	38	26	68	57-79

## Arizona

Program Name City and State	Number of Examinees	Number Passing	Percent Passing	95% Confidence Interval
Banner Good Samaritan Medical Center Program Phoenix, AZ	62	52	84	74-94
(Combined Internal Medicine-Pediatrics)	14	11	79	65-93
Maricopa Medical Center Program Phoenix, AZ	53	42	79	68-90
Mayo School of Graduate Medical Education (Arizona) Program Scottsdale, AZ	32	29	91	80-100
St Joseph's Hospital and Medical Center Program Phoenix, AZ	26	24	92	80-100
University of Arizona College of Medicine at South Campus Tucson, AZ	19	15	79	66-92
University of Arizona Program Tucson, AZ	55	45	82	72-92

## Arkansas

Program Name City and State	Number of Examinees	Number Passing	Percent Passing	95% Confidence Interval
University of Arkansas for Medical Sciences Program Little Rock, AR	53	45	85	74-96
(Combined Internal Medicine-Pediatrics)	10	8	80	65-95

## California

Program Name City and State	Number of Examinees	Number Passing	Percent Passing	95% Confidence Interval
Alameda County Medical Center Program Oakland, CA	40	26	65	54-76
California Pacific Medical Center Program San Francisco, CA	40	37	93	82-100
Cedars-Sinai Medical Center Program Los Angeles, CA	125	110	88	78-98
Huntington Memorial Hospital Program Pasadena, CA	19	13	68	55-81
Kaiser Permanente Medical Group (Northern California)/San Francisco Program San Francisco, CA	29	27	93	81-100
Kaiser Permanente Medical Group (Northern California)/Santa Clara Program Santa Clara, CA	32	28	88	77-99
Kaiser Permanente Medical Group (Northern California/Oakland) Program Oakland, CA	31	24	77	66-88
Kaiser Permanente Southern California (Los Angeles) Program Los Angeles, CA	34	31	91	80-100
Kern Medical Center Program Bakersfield, CA	22	18	82	70-94
Loma Linda University Program Loma Linda, CA	79	67	85	75-95
(Combined Internal Medicine-Pediatrics)	11	7	64	49-79
Los Angeles County-Harbor-UCLA Medical Center Program Torrance, CA	51	44	86	75-97
Naval Medical Center (San Diego) Program San Diego, CA	26	21	81	69-93
San Joaquin General Hospital Program French Camp, CA	18	13	72	59-85
Santa Barbara Cottage Hospital Program Santa Barbara, CA	21	19	90	78-100
Santa Clara Valley Medical Center Program San Jose, CA	44	37	84	73-95
Scripps Clinic/Scripps Green Hospital Program La Jolla, CA	29	27	93	81-100
Scripps Mercy Hospital Program San Diego, CA	32	30	94	83-100
St Mary Medical Center Program Long Beach, CA	24	19	79	67-91
St Mary's Hospital and Medical Center Program San Francisco, CA	23	16	70	58-82
Stanford University Program Stanford, CA	94	87	93	83-100

UCLA Medical Center Program Los Angeles, CA	93	88	95	85-100
(Combined Internal Medicine-Pediatrics)	12	11	92	78-100
UCLA-Olive View Program Sylmar, CA	64	51	80	70-90
University of California (Davis) Health System Program Sacramento, CA	83	75	90	80-100
University of California (Irvine) Program Orange, CA	59	52	88	78-98
University of California (San Diego) Program San Diego, CA	78	77	99	89-100
(Combined Internal Medicine-Pediatrics)	12	12	100	86-100
University of California (San Francisco) Program San Francisco, CA	166	161	97	87-100
University of California (San Francisco)/Fresno Program Fresno, CA	45	40	89	78-100
University of Southern California/LAC+USC Medical Center Program Los Angeles, CA	156	125	80	70-90
(Combined Internal Medicine-Pediatrics)	17	17	100	87-100
White Memorial Medical Center Program Los Angeles, CA	13	8	62	48-76

## Colorado

Program Name City and State	Number of Examinees	Number Passing	Percent Passing	95% Confidence Interval
Exempla St Joseph Hospital Program Denver, CO	27	25	93	81-100
University of Colorado Program Aurora, CO	145	141	97	87-100

## Connecticut

Program Name City and State	Number of Examinees	Number Passing	Percent Passing	95% Confidence Interval
Bridgeport Hospital/Yale University Program Bridgeport, CT	41	35	85	74-96
Danbury Hospital Program Danbury, CT	38	38	100	89-100
Greenwich Hospital Association Program Greenwich, CT	16	5	31	18-44
Griffin Hospital Program Derby, CT	17	14	82	69-95
Hospital of St Raphael Program New Haven, CT	52	45	87	76-98
Norwalk Hospital Program Norwalk, CT	35	30	86	75-97
St Mary's Hospital (Waterbury) Program Waterbury, CT	31	30	97	86-100
St Vincent's Medical Center Program Bridgeport, CT	24	23	96	84-100
Stamford Hospital/Columbia University College of Physicians and Surgeons Program Stamford, CT	18	12	67	54-80
University of Connecticut (New Britain) Program Farmington, CT	47	40	85	74-96
University of Connecticut Program Farmington, CT	106	101	95	85-100
Yale-New Haven Medical Center (Waterbury) Program New Haven, CT	42	37	88	77-99
(Combined Internal Medicine-Pediatrics)	13	12	92	78-100
Yale-New Haven Medical Center Program New Haven, CT	104	89	86	76-96

## Delaware

Program Name City and State	Number of Examinees	Number Passing	Percent Passing	95% Confidence Interval
Jefferson Medical College/Christiana Care Health Services Program Newark, DE	38	30	79	68-90
(Combined Internal Medicine-Pediatrics)	12	9	75	61-89

## District of Columbia

Program Name City and State	Number of Examinees	Number Passing	Percent Passing	95% Confidence Interval
George Washington University Program Washington, DC	92	81	88	78-98
Georgetown University Hospital Program Washington, DC	81	67	83	73-93
(Combined Internal Medicine-Pediatrics)	12	10	83	69-97
Georgetown University Hospital/Washington Hospital Center Program Washington, DC	65	55	85	75-95
Howard University Program Washington, DC	66	60	91	81-100
Providence Hospital Program Washington, DC	23	16	70	58-82

## Florida

Program Name City and State	Number of Examinees	Number Passing	Percent Passing	95% Confidence Interval
Cleveland Clinic Hospital (Florida) Program Weston, FL	26	25	96	84-100
Florida Hospital Medical Center Program Orlando, FL	18	16	89	76-100
Jackson Memorial Hospital/Jackson Health System Program Miami, FL	105	79	75	65-85
(Combined Internal Medicine-Pediatrics)	10	5	50	35-65
Mayo School of Graduate Medical Education (Jacksonville) Program Jacksonville, FL	20	19	95	83-100
Mount Sinai Medical Center of Florida Program Miami Beach, FL	30	23	77	66-88
Orlando Regional Healthcare Program Orlando, FL	35	29	83	72-94
University of Florida Health Science Center/Jacksonville Program Jacksonville, FL	37	34	92	81-100
University of Florida Program Gainesville, FL	73	62	85	75-95
University of Miami; Palm Beach Regional Campus IM Program Atlantis, FL	54	42	78	67-89
University of South Florida Program Tampa, FL	76	69	91	81-100

## Georgia

Program Name City and State	Number of Examinees	Number Passing	Percent Passing	95% Confidence Interval
Atlanta Medical Center Program Atlanta, GA	28	28	100	88-100
Dwight David Eisenhower Army Medical Center Program Fort Gordon, GA	13	11	85	71-99
Emory University Program Atlanta, GA	152	139	91	81-100
Georgia Health Sciences University Program Augusta, GA	46	34	74	63-85
Mercer University School of Medicine (Savannah) Program Savannah, GA	29	23	79	67-91
Mercer University School of Medicine Program Macon, GA	27	21	78	66-90
Morehouse School of Medicine Program Atlanta, GA	49	36	73	62-84

## Hawaii

Program Name City and State	Number of Examinees	Number Passing	Percent Passing	95% Confidence Interval
Tripler Army Medical Center Program Tripler AMC, HI	27	22	81	69-93
University of Hawaii Program Honolulu, HI	48	46	96	85-100



## Illinois

Program Name City and State	Number of Examinees	Number Passing	Percent Passing	95% Confidence Interval
Advocate Illinois Masonic Medical Center/North Side Health Network Program Chicago, IL	48	38	79	68-90
Advocate Lutheran General Hospital Program Park Ridge, IL	42	35	83	72-94
Cook County Hospital Program Chicago, IL	131	121	92	82-100
Louis A Weiss Memorial Hospital Program Chicago, IL	34	30	88	77-99
Loyola University Program Maywood, IL	74	65	88	78-98
(Combined Internal Medicine-Pediatrics)	13	13	100	86-100
MacNeal Hospital Berwyn, IL	35	33	94	83-100
McGaw Medical Center of Northwestern University Program Chicago, IL	114	112	98	88-100
Mercy Hospital and Medical Center Program Chicago, IL	46	40	87	76-98
NorthShore University HealthSystem Evanston, IL	46	33	72	61-83
Presence Saint Francis Hospital Evanston, IL	44	42	95	84-100
Rush University Medical Center Program Chicago, IL	108	84	78	68-88
(Combined Internal Medicine-Pediatrics)	12	9	75	61-89
Southern Illinois University Program Springfield, IL	44	39	89	78-100
St Joseph Hospital Program Chicago, IL	64	58	91	81-100
The Chicago Medical School at Rosalind Franklin University of Medicine and Science North Chicago, IL	56	47	84	74-94
University of Chicago Program Chicago, IL	88	79	90	80-100
(Combined Internal Medicine-Pediatrics)	12	12	100	86-100
University of Illinois College of Medicine at Chicago Program Chicago, IL	96	88	92	82-100
(Combined Internal Medicine-Pediatrics)	13	12	92	78-100
University of Illinois College of Medicine at Chicago/Advocate Christ Medical Center Oak Lawn, IL	53	48	91	80-100

University of Illinois College of Medicine at Peoria Program Peoria, IL	26	22	85	73-97
(Combined Internal Medicine-Pediatrics)	20	13	65	53-77
University of Illinois College of Medicine at Urbana Program Urbana, IL	38	37	97	86-100
West Suburban Medical Center Program Oak Park, IL	21	13	62	50-74

## Indiana

Program Name City and State	Number of Examinees	Number Passing	Percent Passing	95% Confidence Interval
Ball Memorial Hospital Program Muncie, IN	18	16	89	76-100
Indiana University School of Medicine Program Indianapolis, IN	116	95	82	72-92
(Combined Internal Medicine-Pediatrics)	36	32	89	78-100
St Vincent Hospital and Health Care Center Program Indianapolis, IN	43	35	81	70-92

## Iowa

Program Name City and State	Number of Examinees	Number Passing	Percent Passing	95% Confidence Interval
University of Iowa (Des Moines) Program Des Moines, IA	25	21	84	72-96
University of Iowa Hospitals and Clinics Program Iowa City, IA	75	71	95	85-100

## Kansas

Program Name City and State	Number of Examinees	Number Passing	Percent Passing	95% Confidence Interval
University of Kansas (Wichita) Program Wichita, KS	25	22	88	76-100
University of Kansas Medical Center Program Kansas City, KS	76	61	80	70-90

## Kentucky

Program Name City and State	Number of Examinees	Number Passing	Percent Passing	95% Confidence Interval
University of Kentucky College of Medicine Program Lexington, KY	65	61	94	84-100
(Combined Internal Medicine-Pediatrics)	17	13	76	63-89
University of Louisville Program Louisville, KY	58	51	88	78-98
(Combined Internal Medicine-Pediatrics)	11	8	73	58-88

## Louisiana

Program Name City and State	Number of Examinees	Number Passing	Percent Passing	95% Confidence Interval
Leonard J. Chabert Medical Center Program Houma, LA	18	12	67	54-80
Louisiana State University (Baton Rouge) Program Baton Rouge, LA	30	26	87	76-98
Louisiana State University (Lafayette) Program Lafayette, LA	21	13	62	50-74
Louisiana State University (Shreveport) Program Shreveport, LA	62	44	71	61-81
(Combined Internal Medicine-Pediatrics)	13	9	69	55-83
Louisiana State University Program New Orleans, LA	35	24	69	58-80
(Combined Internal Medicine-Pediatrics)	12	8	67	53-81
Ochsner Clinic Foundation Program New Orleans, LA	38	31	82	71-93
Tulane University Program New Orleans, LA	75	53	71	61-81

## Maine

Program Name City and State	Number of Examinees	Number Passing	Percent Passing	95% Confidence Interval
Maine Medical Center Program Portland, ME	38	29	76	65-87

## Maryland

Program Name City and State	Number of Examinees	Number Passing	Percent Passing	95% Confidence Interval
Franklin Square Hospital Center Program Baltimore, MD	32	28	88	77-99
Good Samaritan Hospital of Maryland Program Baltimore, MD	34	34	100	89-100
Greater Baltimore Medical Center Program Baltimore, MD	34	33	97	86-100
Johns Hopkins University Program Baltimore, MD	105	99	94	84-100
Johns Hopkins University/Bayview Medical Center Program Baltimore, MD	42	37	88	77-99
Johns Hopkins University/Sinai Hospital of Baltimore Program Baltimore, MD	35	25	71	60-82
Maryland General Hospital Program Baltimore, MD	23	23	100	88-100
MedStar Harbor Hospital Program Baltimore, MD	29	27	93	81-100
MedStar Union Memorial Hospital Program Baltimore, MD	32	28	88	77-99
National Capital Consortium (Bethesda) Program Bethesda, MD	47	33	70	59-81
Prince George's Hospital Center Program Cheverly, MD	35	31	89	78-100
St Agnes HealthCare Program Baltimore, MD	37	33	89	78-100
University of Maryland Program Baltimore, MD	90	80	89	79-99

## Massachusetts

Program Name City and State	Number of Examinees	Number Passing	Percent Passing	95% Confidence Interval
Baystate Medical Center/Tufts University School of Medicine Program Springfield, MA	53	36	68	57-79
(Combined Internal Medicine-Pediatrics)	21	17	81	69-93
Berkshire Medical Center Program Pittsfield, MA	31	24	77	66-88
Beth Israel Deaconess Medical Center Program Boston, MA	140	135	96	86-100
Boston University Medical Center Program Boston, MA	133	113	85	75-95
Brigham and Women's Hospital Program Boston, MA	148	145	98	88-100
(Combined Internal Medicine-Pediatrics)	13	12	92	78-100
Cambridge Hospital/Cambridge Health Alliance Program Cambridge, MA	21	19	90	78-100
Lahey Clinic Program Burlington, MA	35	28	80	69-91
Massachusetts General Hospital Program Boston, MA	153	143	93	83-100
(Combined Internal Medicine-Pediatrics)	11	11	100	85-100
MetroWest Medical Center Program Framingham, MA	21	19	90	78-100
Mount Auburn Hospital Program Cambridge, MA	32	26	81	70-92
Salem Hospital Program Salem, MA	17	15	88	75-100
St Vincent Hospital Program Worcester, MA	52	44	85	74-96
Steward St Elizabeth's Medical Center Program Boston, MA	46	36	78	67-89
Steward Carney Hospital Program Boston, MA	29	24	83	71-95
Tufts Medical Center Program Boston, MA	72	65	90	80-100
University of Massachusetts Program Worcester, MA	81	64	79	69-89
(Combined Internal Medicine-Pediatrics)	11	10	91	76-100

## Michigan

Program Name City and State	Number of Examinees	Number Passing	Percent Passing	95% Confidence Interval
Central Michigan University College of Medicine Program Saginaw, MI	23	19	83	71-95
Grand Rapids Medical Education and Research Center/Michigan State University Pro Grand Rapids, MI	43	36	84	73-95
Henry Ford Hospital Program Detroit, MI	111	100	90	80-100
Hurley Medical Center/Michigan State University Program Flint, MI	28	27	96	84-100
(Combined Internal Medicine-Pediatrics)	15	14	93	80-100
McLaren Regional Medical Center/Michigan State University Program Flint, MI	35	35	100	89-100
Michigan State University Program East Lansing, MI	30	24	80	69-91
Oakwood Hospital Program Dearborn, MI	26	17	65	53-77
Providence Hospital and Medical Centers Program Southfield, MI	33	25	76	65-87
St John Hospital and Medical Center Program Grosse Pointe Woods, MI	44	42	95	84-100
St Joseph Mercy Hospital Program Ann Arbor, MI	37	31	84	73-95
St Joseph Mercy-Oakland Program Pontiac, MI	50	45	90	79-100
University of Michigan Program Ann Arbor, MI	128	119	93	83-100
(Combined Internal Medicine-Pediatrics)	21	21	100	88-100
Wayne State University/Detroit Medical Center (Grace Hospital) Program Detroit, MI	52	41	79	68-90
Wayne State University/Detroit Medical Center Program Detroit, MI	101	84	83	73-93
(Combined Internal Medicine-Pediatrics)	21	17	81	69-93
Western Mchigan Univ. School of Medicine Kalamazoo, MI	27	23	85	73-97
(Combined Internal Medicine-Pediatrics)	10	8	80	65-95
William Beaumont Hospital Program Royal Oak, MI	51	43	84	73-95
(Combined Internal Medicine-Pediatrics)	10	8	80	65-95

## Minnesota

Program Name City and State	Number of Examinees	Number Passing	Percent Passing	95% Confidence Interval
Abbott-Northwestern Hospital Program Minneapolis, MN	32	28	88	77-99
Hennepin County Medical Center Program Minneapolis, MN	70	62	89	79-99
Mayo School of Graduate Medical Education (Rochester) Program Rochester, MN	139	136	98	88-100
University of Minnesota Program Minneapolis, MN	82	78	95	85-100
(Combined Internal Medicine-Pediatrics)	29	27	93	81-100

## Mississippi

Program Name City and State	Number of Examinees	Number Passing	Percent Passing	95% Confidence Interval
Keesler Medical Center Program Keesler AFB, MS	21	18	86	74-98
University of Mississippi Medical Center Program Jackson, MS	58	44	76	66-86

## Missouri

Program Name City and State	Number of Examinees	Number Passing	Percent Passing	95% Confidence Interval
St John's Mercy Medical Center Program Saint Louis, MO	21	19	90	69-89
St Louis University School of Medicine Program Saint Louis, MO	73	58	79	75-100
(Combined Internal Medicine-Pediatrics)	10	9	90	78-100
St Luke's Hospital Program Saint Louis, MO	38	34	89	74-98
St Mary's Health Center Program Saint Louis, MO	21	18	86	62-84
University of Missouri at Kansas City Program Kansas City, MO	44	32	73	61-89
(Combined Internal Medicine-Pediatrics)	12	9	75	79-100
University of Missouri Program Columbia, MO	52	47	90	72-100
Washington University/B-JH/SLCH Consortium Program Saint Louis, MO	140	133	95	69-89

## Nebraska

Program Name City and State	Number of Examinees	Number Passing	Percent Passing	95% Confidence Interval
Creighton University Program Omaha, NE	59	53	90	80-100
University of Nebraska Medical Center College of Medicine Program Omaha, NE	48	45	94	83-100

## Nevada

Program Name City and State	Number of Examinees	Number Passing	Percent Passing	95% Confidence Interval
University of Nevada School of Medicine (Las Vegas) Program Las Vegas, NV	40	39	98	87-100
University of Nevada School of Medicine Program Reno, NV	31	27	87	76-98

## New Hampshire

Program Name City and State	Number of Examinees	Number Passing	Percent Passing	95% Confidence Interval
Dartmouth-Hitchcock Medical Center Program Lebanon, NH	54	44	81	70-92



## New Jersey

Program Name City and State	Number of Examinees	Number Passing	Percent Passing	95% Confidence Interval
Atlantic Health System (Morristown) Program Morristown, NJ	39	36	92	81-100
Atlantic Health System (Overlook) Program Summit, NJ	31	29	94	83-100
AtlantiCare Regional Medical Center Program Atlantic City, NJ	31	26	84	73-95
Capital Health Regional Medical Center Trenton, NJ	30	21	70	59-81
Cooper Medical School of Rowan University Camden, NJ	45	39	87	76-98
Hackensack UMC Mountainside Program Montclair, NJ	23	20	87	75-99
Jersey Shore University Medical Center Program Neptune, NJ	47	38	81	70-92
Monmouth Medical Center Program Long Branch, NJ	36	32	89	78-100
Mount Sinai School of Medicine (Englewood) Program Englewood, NJ	34	32	94	83-100
Mount Sinai School of Medicine (Jersey City) Program Jersey City, NJ	44	41	93	82-100
Mount Sinai School of Medicine (St Joseph's Regional Medical Center) Program Paterson, NJ	46	41	89	78-100
Newark Beth Israel Medical Center Program Newark, NJ	35	25	71	60-82
Raritan Bay Medical Center Program Perth Amboy, NJ	23	19	83	71-95
Seton Hall University School of Graduate Medical Education (St Francis) Program Trenton, NJ	21	12	57	45-69
Seton Hall University School of Health and Medical Sciences Program South Orange, NJ	75	62	83	73-93
St Barnabas Medical Center Program Livingston, NJ	29	26	90	78-100
St Peter's University Hospital Program/Drexel University New Brunswick, NJ	42	39	93	82-100
UMDNJ-New Jersey Medical School Program Newark, NJ	87	62	71	61-81
(Combined Internal Medicine-Pediatrics)	10	8	80	65-95
UMDNJ-Robert Wood Johnson Medical School Program New Brunswick, NJ	63	60	95	85-100

## New Mexico

Program Name City and State	Number of Examinees	Number Passing	Percent Passing	95% Confidence Interval
University of New Mexico Program Albuquerque, NM	63	55	87	77-97

## New York

Program Name City and State	Number of Examinees	Number Passing	Percent Passing	95% Confidence Interval
Albany Medical Center Program Albany, NY	44	37	84	73-95
Albert Einstein College of Medicine (Jacobi) Program Bronx, NY	91	84	92	82-100
Albert Einstein College of Medicine (Montefiore) Program Bronx, NY	143	126	88	78-98
Albert Einstein College of Medicine at Beth Israel Medical Center Program New York, NY	104	85	82	72-92
Bassett Healthcare Program Cooperstown, NY	23	20	87	75-99
Bronx-Lebanon Hospital Center Program Bronx, NY	87	79	91	81-100
Brookdale University Hospital and Medical Center Program Brooklyn, NY	46	28	61	50-72
Brooklyn Hospital Center Program Brooklyn, NY	84	76	90	80-100
Coney Island Hospital Program Brooklyn, NY	61	53	87	77-97
Flushing Hospital Medical Center Program Flushing, NY	43	33	77	66-88
Forest Hills Hospital Program Forest Hills, NY	35	23	66	55-77
Harlem Hospital Center Program New York, NY	68	53	78	68-88
Interfaith Medical Center Program Brooklyn, NY	83	75	90	80-100
Jamaica Hospital Medical Center Program Jamaica, NY	76	74	97	87-100
Kingsbrook Jewish Medical Center Program Brooklyn, NY	45	37	82	71-93
Lenox Hill Hospital Program New York, NY	71	65	92	82-100

Lincoln Medical and Mental Health Center Program Bronx, NY	84	66	79	69-89
Long Island College Hospital Program Brooklyn, NY	59	39	66	56-76
Lutheran Medical Center Program Brooklyn, NY	70	63	90	80-100
Maimonides Medical Center Program Brooklyn, NY	74	61	82	72-92
Mount Sinai School of Medicine (Bronx) Program Bronx, NY	49	42	86	75-97
Mount Sinai School of Medicine (Elmhurst) Program Elmhurst, NY	45	35	78	67-89
Mount Sinai School of Medicine (Queens Hospital Center) Program Jamaica, NY	54	52	96	85-100
Mount Sinai School of Medicine Program New York, NY	120	105	88	78-98
(Combined Internal Medicine-Pediatrics)	12	12	100	86-100
Mount Vernon Hospital Program Mount Vernon, NY	23	21	91	79-100
Nassau University Medical Center Program East Meadow, NY	66	53	80	70-90
New York Hospital Medical Center of Queens/Cornell University Medical College Pr Flushing, NY	61	40	66	56-76
New York Medical College (Bronx) Program Bronx, NY	63	57	90	80-100
New York Medical College (Metropolitan) Program New York, NY	55	50	91	81-100
New York Medical College (Richmond) Program Staten Island, NY	47	36	77	66-88
New York Medical College (Sound Shore) Program New Rochelle, NY	36	28	78	67-89
New York Medical College at Westchester Medical Center Program Valhalla, NY	43	39	91	80-100
New York Methodist Hospital Program Brooklyn, NY	97	87	90	80-100
New York Presbyterian Hospital (Columbia Campus) Program New York, NY	130	123	95	85-100
New York Presbyterian Hospital (Cornell Campus) Program New York, NY	132	112	85	75-95
New York University School of Medicine Program New York, NY	141	117	83	73-93
NSLIJHS/Hofstra North Shore-LIJ School of Medicine Program New Hyde Park, NY	122	97	80	70-90

NY Downtown Hospital Program New York, NY	44	39	89	78-100
Rochester General Hospital Program Rochester, NY	51	41	80	69-91
St Barnabas Hospital Program Bronx, NY	80	71	89	79-99
St John's Episcopal Hospital-South Shore Program Far Rockaway, NY	59	55	93	83-100
St Luke's-Roosevelt Hospital Center Program New York, NY	129	106	82	72-92
Staten Island University Hospital Program Staten Island, NY	86	78	91	81-100
SUNY at Stony Brook Program Stony Brook, NY	77	57	74	64-84
SUNY Health Science Center at Brooklyn Program Brooklyn, NY	127	92	72	62-82
SUNY Upstate Medical University Program Syracuse, NY	67	61	91	81-100
United Health Services Hospitals Program Johnson City, NY	21	12	57	45-69
Unity Health System (Rochester) Program Rochester, NY	38	34	89	78-100
University at Buffalo (Catholic Health System--Sisters of Charity) Program Buffalo, NY	30	24	80	69-91
University at Buffalo Program Buffalo, NY	103	89	86	76-96
University of Rochester Program Rochester, NY	61	49	80	70-90
(Combined Internal Medicine-Pediatrics)	18	15	83	70-96
Winthrop-University Hospital Program Mineola, NY	66	60	91	81-100
Woodhull Medical and Mental Health Center Program Brooklyn, NY	55	42	76	66-86
Wyckoff Heights Medical Center Program Brooklyn, NY	55	49	89	79-99

## North Carolina

Program Name City and State	Number of Examinees	Number Passing	Percent Passing	95% Confidence Interval
Carolinas Medical Center Program Charlotte, NC	30	30	100	89-100
Duke University Hospital Program Durham, NC	130	112	86	76-96
(Combined Internal Medicine-Pediatrics)	10	9	90	75-100
Moses H Cone Memorial Hospital Program Greensboro, NC	17	14	82	69-95
New Hanover Regional Medical Center Program Wilmington, NC	20	18	90	78-100
University of North Carolina Hospitals Program Chapel Hill, NC	69	66	96	86-100
(Combined Internal Medicine-Pediatrics)	16	16	100	87-100
Vidant Medical Center/East Carolina University Program Greenville, NC	48	41	85	74-96
(Combined Internal Medicine-Pediatrics)	17	9	53	40-66
Wake Forest School of Medicine Program Winston Salem, NC	82	70	85	75-95

## North Dakota

Program Name City and State	Number of Examinees	Number Passing	Percent Passing	95% Confidence Interval
University of North Dakota Program Fargo, ND	24	22	92	80-100

## Ohio

Program Name City and State	Number of Examinees	Number Passing	Percent Passing	95% Confidence Interval
Akron General Medical Center/NEOUCOM Program Akron, OH	27	22	81	69-93
Canton Medical Education Foundation/NEOUCOM Program Canton, OH	34	29	85	74-96
Case Western Reserve University (MetroHealth) Program Cleveland, OH	69	49	71	61-81
(Combined Internal Medicine-Pediatrics)	13	9	69	55-83
Case Western Reserve University (St Vincent Charity Medical Center) Program Cleveland, OH	46	42	91	80-100
Case Western Reserve University/University Hospitals Case Medical Center Program Cleveland, OH	102	84	82	72-92
Christ Hospital Program Cincinnati, OH	23	17	74	62-86
Cleveland Clinic Foundation Program Cleveland, OH	147	133	90	80-100
Fairview Hospital Program Cleveland, OH	31	30	97	86-100
Jewish Hospital of Cincinnati Program Cincinnati, OH	24	20	83	71-95
Kettering Medical Center Program Kettering, OH	25	15	60	48-72
Mercy Health Partners / St Vincent Mercy Medical Center Program Toledo, OH	27	24	89	77-100
Mount Carmel Program Columbus, OH	22	16	73	61-85
Ohio State University Hospital Program Columbus, OH	70	66	94	84-100
(Combined Internal Medicine-Pediatrics)	17	15	88	75-100
Riverside Methodist Hospitals (OhioHealth) Program Columbus, OH	34	28	82	71-93
St Elizabeth Health Center/NEOUCOM Program Youngstown, OH	24	20	83	71-95
Summa Health System/NEOUCOM Program Akron, OH	45	32	71	60-82
TriHealth (Good Samaritan Hospital) Program Cincinnati, OH	22	8	36	24-48
University of Cincinnati Medical Center/University of Cincinnati College of Medi Cincinnati, OH	68	60	88	78-98
(Combined Internal Medicine-Pediatrics)	20	19	95	83-100

University of Toledo Program Toledo, OH	40	34	85	74-96
Western Reserve Health Education/NEOMED Youngstown, OH	31	28	90	79-100
Wright State University Program Dayton, OH	79	70	89	79-99
(Combined Internal Medicine-Pediatrics)	10	4	40	25-55

## Oklahoma

Program Name City and State	Number of Examinees	Number Passing	Percent Passing	95% Confidence Interval
University of Oklahoma College of Medicine-Tulsa Program Tulsa, OK	42	33	79	68-90
University of Oklahoma Health Sciences Center Program Oklahoma City, OK	48	43	90	79-100

## Oregon

Program Name City and State	Number of Examinees	Number Passing	Percent Passing	95% Confidence Interval
Legacy Emanuel Hospital and Health Center Program Portland, OR	44	33	75	64-86
Oregon Health & Science University Program Portland, OR	88	82	93	83-100
Providence Health System/Providence Medical Center Program Portland, OR	25	22	88	76-100
Providence Health System/St Vincent Hospital and Medical Center Program Portland, OR	20	18	90	78-100

## Pennsylvania

Program Name City and State	Number of Examinees	Number Passing	Percent Passing	95% Confidence Interval
Abington Memorial Hospital Program Abington, PA	38	34	89	78-100
Albert Einstein Healthcare Network Program Philadelphia, PA	77	73	95	85-100
Allegheny General Hospital-Western Pennsylvania Hospital Medical Education Conso Pittsburgh, PA	87	74	85	75-95
Crozer-Chester Medical Center Program Upland, PA	21	17	81	69-93
Drexel University College of Medicine/Hahnemann University Hospital Program Philadelphia, PA	125	99	79	69-89
Easton Hospital Program Easton, PA	25	21	84	72-96
Geisinger Health System Program Danville, PA	43	32	74	63-85
(Combined Internal Medicine-Pediatrics)	12	10	83	69-97
Guthrie/Robert Packer Hospital Program Sayre, PA	26	25	96	84-100
Lankenau Hospital Program Wynnewood, PA	39	36	92	81-100
Lehigh Valley Hospital/Pennsylvania State University Program Allentown, PA	43	37	86	75-97
Mercy Catholic Medical Center Program Darby, PA	42	37	88	77-99
Penn State University/Milton S Hershey Medical Center Program Hershey, PA	57	53	93	83-100
(Combined Internal Medicine-Pediatrics)	11	10	91	76-100
Pennsylvania Hospital of the University of Pennsylvania Health System Program Philadelphia, PA	37	25	68	57-79
PinnacleHealth Hospitals Program Harrisburg, PA	33	27	82	71-93
Reading Hospital West Reading, PA	20	20	100	88-100
St Luke's University Hospital Program Bethlehem, PA	23	21	91	79-100
Temple University Hospital Program Philadelphia, PA	97	84	87	77-97
Temple University/Conemaugh Valley Memorial Hospital Program Johnstown, PA	19	16	84	71-97



Thomas Jefferson University Program Philadelphia, PA	119	106	89	79-99
University of Pennsylvania Program Philadelphia, PA	142	134	94	84-100
(Combined Internal Medicine-Pediatrics)	12	12	100	86-100
University of Pittsburgh Medical Center Medical Education (McKeesport Hospital) Mc Keesport, PA	36	34	94	83-100
University of Pittsburgh Medical Center Medical Education Mercy Program Pittsburgh, PA	46	38	83	72-94
UPMC Medical Education Program Pittsburgh, PA	143	133	93	83-100
(Combined Internal Medicine-Pediatrics)	12	12	100	86-100
Wright Center for Graduate Medical Educ. Prog. Scranton, PA	36	36	100	89-100
York Hospital Program York, PA	32	31	97	86-100

## Puerto Rico

Program Name City and State	Number of Examinees	Number Passing	Percent Passing	95% Confidence Interval
Damas Hospital-Ponce School of Medicine Educational Consortium Program Ponce, PR	18	7	39	26-52
Hospital de la Concepcion Program San German, PR	14	11	79	65-93
Hospital Episcopal San Lucas/Ponce School of Medicine Program Ponce, PR	14	7	50	36-64
Ramon Betances Hospital-Mayaguez Medical Center/Ponce School of Medicine Consort Mayaguez, PR	13	9	69	55-83
San Juan City Hospital Program San Juan, PR	30	22	73	62-84
Universidara Central del Caribe Program Bayamon, PR	21	10	48	36-60
University of Puerto Rico Program San Juan, PR	45	44	98	87-100
VA Caribbean Healthcare System Program San Juan, PR	52	50	96	85-100

## Rhode Island

Program Name City and State	Number of Examinees	Number Passing	Percent Passing	95% Confidence Interval
Brown University Program Providence, RI	122	109	89	79-99
(Combined Internal Medicine-Pediatrics)	13	12	92	78-100
Memorial Hospital of Rhode Island/Warren Alpert School of Medicine of Brown Univ Pawtucket, RI	31	31	100	89-100
Roger Williams Medical Center Program Providence, RI	33	25	76	65-87

## South Carolina

Program Name City and State	Number of Examinees	Number Passing	Percent Passing	95% Confidence Interval
Greenville Hospital System Program Greenville, SC	27	21	78	66-90
Medical University of South Carolina Program Charleston, SC	73	62	85	75-95
Palmetto Health/University of South Carolina School of Medicine Program Columbia, SC	34	27	79	68-90

## South Dakota

Program Name City and State	Number of Examinees	Number Passing	Percent Passing	95% Confidence Interval
University of South Dakota Program Sioux Falls, SD	23	18	78	66-90

## Tennessee

Program Name City and State	Number of Examinees	Number Passing	Percent Passing	95% Confidence Interval
East Tennessee State University Program Johnson City, TN	79	62	78	68-88
Meharry Medical College Program Nashville, TN	37	27	73	62-84
University of Tennessee (Nashville) Program Nashville, TN	16	13	81	68-94
University of Tennessee College of Medicine at Chattanooga Program Chattanooga, TN	24	20	83	71-95
University of Tennessee Medical Center at Knoxville Program Knoxville, TN	28	26	93	81-100
University of Tennessee Program Memphis, TN	75	53	71	61-81
(Combined Internal Medicine-Pediatrics)	18	13	72	59-85
Vanderbilt University Program Nashville, TN	93	87	94	84-100
(Combined Internal Medicine-Pediatrics)	10	10	100	85-100

## Texas

Program Name City and State	Number of Examinees	Number Passing	Percent Passing	95% Confidence Interval
Baylor College of Medicine Program Houston, TX	145	124	86	76-96
(Combined Internal Medicine-Pediatrics)	23	22	96	84-100
Baylor University Medical Center Program Dallas, TX	25	24	96	84-100
Methodist Hospital Program Houston, TX	29	26	90	78-100
Methodist Hospitals of Dallas Program Dallas, TX	26	22	85	73-97
San Antonio Uniformed Services Health Education Consortium (BAMC) Program Fort Sam Houston, TX	71	64	90	80-100
Texas A&M College of Medicine-Scott and White Program Temple, TX	46	42	91	80-100
Texas Health Presbyterian Dallas Program Dallas, TX	18	17	94	81-100
Texas Tech University (Amarillo) Program Amarillo, TX	27	22	81	69-93
Texas Tech University (El Paso) Program El Paso, TX	44	42	95	84-100
Texas Tech University (Lubbock) Program Lubbock, TX	33	26	79	68-90
Texas Tech University (Odessa) Program Odessa, TX	36	35	97	86-100
University of Texas at Houston Program Houston, TX	101	76	75	65-85
(Combined Internal Medicine-Pediatrics)	12	11	92	78-100
University of Texas Health Science Center at San Antonio Lower Rio Grande Valley Harlingen, TX	16	12	75	62-88
University of Texas Health Science Center at San Antonio Program San Antonio, TX	75	68	91	81-100
University of Texas Medical Branch (Austin) Program Austin, TX	41	36	88	77-99
University of Texas Medical Branch Hospitals Program Galveston, TX	64	49	77	67-87
University of Texas Southwestern Medical School Program Dallas, TX	143	128	90	80-100
William Beaumont Army Medical Center Program El Paso, TX	20	15	75	63-87

## Utah

Program Name City and State	Number of Examinees	Number Passing	Percent Passing	95% Confidence Interval
University of Utah Program Salt Lake City, UT	83	77	93	83-100

## Vermont

Program Name City and State	Number of Examinees	Number Passing	Percent Passing	95% Confidence Interval
University of Vermont Program Burlington, VT	37	29	78	67-89

## Virginia

Program Name City and State	Number of Examinees	Number Passing	Percent Passing	95% Confidence Interval
Carilion Clinic Program Roanoke, VA	35	30	86	75-97
Eastern Virginia Medical School Program Norfolk, VA	34	29	85	74-96
Naval Medical Center (Portsmouth) Program Portsmouth, VA	26	18	69	57-81
University of Virginia Program 1464812049 Charlottesville, VA	88	84	95	85-100
Virginia Commonwealth University Health System Program Richmond, VA	90	76	84	74-94

## Washington

Program Name City and State	Number of Examinees	Number Passing	Percent Passing	95% Confidence Interval
Madigan Army Medical Center Program Tacoma, WA	25	24	96	84-100
Spokane Medical Centers/University of Washington School of Medicine Program Spokane, WA	21	18	86	74-98
University of Washington Program Seattle, WA	146	140	96	86-100
Virginia Mason Medical Center Program Seattle, WA	29	28	97	85-100

## West Virginia

Program Name City and State	Number of Examinees	Number Passing	Percent Passing	95% Confidence Interval
Charleston Area Medical Center/West Virginia University (Charleston Division) Pr Charleston, WV	29	23	79	67-91
Marshall University School of Medicine Program Huntington, WV	32	28	88	77-99
West Virginia University Program Morgantown, WV	47	34	72	61-83

## Wisconsin

Program Name City and State	Number of Examinees	Number Passing	Percent Passing	95% Confidence Interval
Aurora Health Care Program Milwaukee, WI	37	31	84	73-95
Gundersen Lutheran Medical Foundation Program La Crosse, WI	21	21	100	88-100
Marshfield Clinic-St Joseph's Hospital Program Marshfield, WI	19	16	84	71-97
Medical College of Wisconsin Affiliated Hospitals Program Milwaukee, WI	89	75	84	74-94
(Combined Internal Medicine-Pediatrics)	14	14	100	86-100
University of Wisconsin Program Madison, WI	71	69	97	87-100