

# Mercy Medical Center Mt. Shasta

## Community Benefit 2021 Report and 2022 Plan

**Adopted November 2021**



## A message from

Rodger Page, president and CEO of Mercy Medical Center Mt. Shasta, and Eva Jimenez, Chair of the Dignity Health North State Community Board.

Dignity Health's approach to community health improvement aims to address significant health needs identified in the Community Health Needs Assessments that we conduct with community input, including from the local public health department. Our initiatives to deliver community benefit include financial assistance for those unable to afford medically necessary care, a range of prevention and health improvement programs conducted by the hospital and with community partners, and investing in efforts that address social determinants of health.

Mercy Medical Center Mt. Shasta shares a commitment with others to improve the health of our community, and delivers programs and services to help achieve that goal. The Community Benefit 2021 Report and 2022 Plan describes much of this work. This report meets requirements in California state law (Senate Bill 697) that not-for-profit hospitals produce an annual community benefit report and plan. Dignity Health hospitals in Arizona and Nevada voluntarily produce these reports and plans, as well. We are proud of the outstanding programs, services and other community benefits our hospital delivers, and are pleased to report to our community.

In fiscal year 2021 (FY21), Mercy Medical Center Mt. Shasta provided \$3,920,189 in patient financial assistance, unreimbursed costs of Medicaid, community health improvement services and other community benefits. The hospital also incurred \$6,894,076 in unreimbursed costs of caring for patients covered by Medicare.

The hospital's Community Board reviewed, approved and adopted the Community Benefit 2021 Report and 2022 Plan at its November 11, 2021 meeting.

Thank you for taking the time to review our report and plan. We welcome any questions or ideas for collaborating that you may have, by reaching out to Alexis Ross, Director Market Area Community Health at 530.225.6114 or by email at alexis.ross@dignityhealth.org.






Rodger Page  
President/CEO

Eva Jimenez  
Chairperson, Board of Directors

# Table of Contents

<b>At-a-Glance Summary</b>	<b>4</b>
<b>Our Hospital and the Community Served</b>	<b>5</b>
About Mercy Medical Center Mt. Shasta	5
Our Mission	5
Financial Assistance for Medically Necessary Care	5
Description of the Community Served	6
Community Need Index	6
<b>Community Assessment and Significant Needs</b>	<b>8</b>
Community Health Needs Assessment	8
Significant Health Needs	8
<b>2021 Report and 2022 Plan</b>	<b>9</b>
Creating the Community Benefit Plan	10
Impact of the Coronavirus Pandemic	10
Report and Plan by Health Need	10
Community Grants Program	13
Program Digests	14
Other Programs and Non-Quantifiable Benefits	18
<b>Economic Value of Community Benefit</b>	<b>19</b>
<b>Hospital Board and Committee Rosters</b>	<b>20</b>

## At-a-Glance Summary

<p><b>Community Served</b></p> 	<p>Mercy Medical Center Mt. Shasta serves a core service area population of approximately 17,110 residents. Siskiyou County is a rural county with the residents spread out over approximately 6,347 square miles. Due to the rural nature of the county, access to care is a consistent barrier for the many residents who are medically underserved and low-income and minority populations. The following zip codes make up the core service area for Mercy Medical Center Mt. Shasta: 96025, 96057, 96067, and 96094.</p>
<p><b>Economic Value of Community Benefit</b></p> 	<p>\$3,920,189 in patient financial assistance, unreimbursed costs of Medicaid, community health improvement services, community grants and other community benefits</p> <p>\$6,894,076 in unreimbursed costs of caring for patients covered by Medicare</p>
<p><b>Significant Community Health Needs Being Addressed</b></p> 	<p>The significant community health needs the hospital is helping to address and that form the basis of this document were identified in the hospital's most recent Community Health Needs Assessment (CHNA). Needs being addressed by strategies and programs are:</p> <ul style="list-style-type: none"> <li>● Access to Care</li> <li>● Maternal and Child Health</li> <li>● Mental Health</li> </ul>
<p><b>FY21 Programs and Services</b></p> 	<p>The hospital delivered several programs and services to help address identified significant community health needs. These included:</p> <ul style="list-style-type: none"> <li>● Bereavement Support Groups</li> <li>● Breastfeeding Support Group</li> <li>● Childbirth Classes</li> <li>● Community Health Screenings</li> <li>● Community Health Education</li> <li>● Community Grants</li> <li>● Hope and Healing Support Group, for parents with early infant loss</li> <li>● Lactation Counseling Services</li> <li>● Provide cash and in-kind donations to local non-profit organizations</li> </ul>
<p><b>FY22 Planned Programs and Services</b></p> 	<p>For FY22, the hospital plans to build upon many of the FY21 initiatives and explore new partnership opportunities with Siskiyou County community organizations with the intention of them continuing over the next year.</p>

This document is publicly available online at, <https://www.dignityhealth.org/north-state/locations/mercy-mtshasta/about-us/community-benefit>. Written comments on this report can be submitted to the Mercy Medical Center Mt. Shasta's Community Health Office, 914 Pine Street, Mt. Shasta, CA 96067 or by e-mail to alexis.ross@dignityhealth.org.

## Our Hospital and the Community Served

### About Mercy Medical Center Mt. Shasta

Mercy Medical Center Mt. Shasta is a member of Dignity Health, which is a part of CommonSpirit Health.

Mercy Medical Center Mt. Shasta is a non-profit health care facility designated a 25-bed Critical Access Hospital, accredited by The Joint Commission, and a member of the American Hospital Association. The Hospital is located off of California Interstate 5 in Mt. Shasta and the facility's campus is 14 acres in size located at the base of Mount Shasta. In addition to the acute care hospital, Mercy Medical Center Mt. Shasta also operates three Rural Health Clinics: Mercy Mt. Shasta Community Clinic, Mercy Lake Shastina Community Clinic and the Dignity Health Pine Street Clinic. With more than 250 skilled professionals and support staff, approximately 45 active doctors, and more than 80 dedicated volunteers, Mercy Mt. Shasta has been consistently named in the Top 100 Critical Access Hospitals by the National Rural Health Association.

### Our Mission

As CommonSpirit Health, we make the healing presence of God known in our world by improving the health of the people we serve, especially those who are vulnerable, while we advance social justice for all.

### Our Vision

A healthier future for all – inspired by faith, driven by innovation, and powered by our humanity.

### Financial Assistance for Medically Necessary Care

Mercy Medical Center Mt. Shasta is dedicated to creating healthier communities by providing financial assistance to persons who have health care needs and are uninsured, underinsured, ineligible for a government program, or otherwise unable to pay. Advocating for the poor and vulnerable is both our mission and our passion. The hospital has financial assistance available to help pay for medically necessary services provided to those patients who meet certain income requirements. The financial assistance policy, a plain language summary of the policy, and a financial assistance application are on the hospital's web site.

## Description of the Community Served

Siskiyou County, California is located in the Northern-most region of California on the California-Oregon border with numerous mountain ranges dividing the county. Yreka, the largest town and the county seat, is located along the I-5 corridor along with the second largest town of Mount Shasta. Two critical access hospitals, Fairchild Medical Center in Yreka and Mercy Medical Center Mt. Shasta in Mt. Shasta, serve the county.

Siskiyou County is a geographically large county covering 6,347 square miles. As is the case for many rural counties, access to care is a consistent barrier for many residents, particularly for underserved, at-risk populations who live in geographically isolated communities.

Mercy Medical Center Mt. Shasta serves a core service area (CSA) comprised mostly of four zip codes in Southern Siskiyou County. Dignity Health hospitals define service areas as the geographic area served by the hospital based on a percentage of hospital discharges and is also used in various other departments of the system and hospital, including strategy and planning. A summary description of the community's demographic indicators using Claritas Pop-Facts® 2021 and SG2 Market Demographic Module is listed below. Additional details can be found in the CHNA report online.

- Total Population: 16,985
- Hispanic or Latino: 12.4%
- Race: 77.2% White, 2.1% Black/African American, 2.9% Asian/Pacific Islander, 5.5% All Others
- Below Poverty: 11.8%
- Unemployment: 5.4%
- No High School Diploma: 6.3%
- Medicaid (household): 9.0%
- Uninsured (household): 5.8%



## Community Need Index

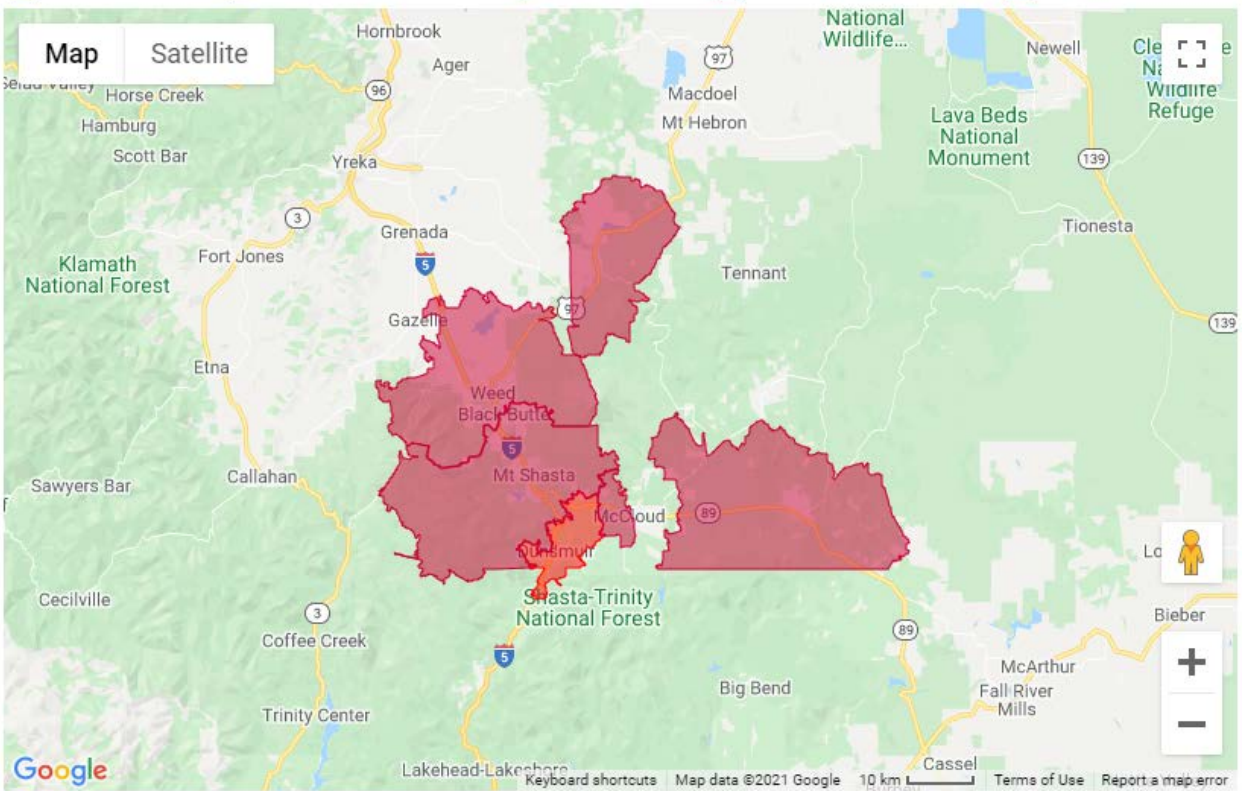
One tool used to assess health need is the Community Need Index (CNI) created and made publicly available by Dignity Health and IBM Watson Health. The CNI analyzes data at the zip code level on five factors known to contribute or be barriers to health care access: income, culture/language, education, housing status, and insurance coverage.

Scores from 1.0 (lowest barriers) to 5.0 (highest barriers) for each factor are averaged to calculate a CNI score for each zip code in the community. Research has shown that communities with the highest CNI scores experience twice the rate of hospital admissions for ambulatory care sensitive conditions as those with the lowest scores.



Lowest Need      Highest Need

1 - 1.7 Lowest      1.8 - 2.5 2nd Lowest      2.6 - 3.3 Mid      3.4 - 4.1 2nd Highest      4.2 - 5 Highest



Mean(zipcode): 3.8 / Mean(person): 3.8      CNI Score Median: 3.7      CNI Score Mode: 3.6

Zip Code	CNI Score	Population	City	County	State
96025	4.2	2073	Dunsmuir	Siskiyou	California
96057	3.6	1134	McCloud	Siskiyou	California
96067	3.8	7024	Mount Shasta	Siskiyou	California
96094	3.6	6754	Weed	Siskiyou	California

## Community Assessment and Significant Needs

The hospital engages in multiple activities to conduct its community health improvement planning process. These include, but are not limited to, conducting a Community Health Needs Assessment with community input at least every three years, identifying collaborating community stakeholder organizations, describing anticipated impacts of program activities and measuring program indicators.

### Community Health Needs Assessment

The health issues that form the basis of the hospital's community benefit plan and programs were identified in the most recent CHNA report, which was adopted in June, 2019.

The CHNA contains several key elements, including:

- Description of the assessed community served by the hospital;
- Description of assessment processes and methods;
- Presentation of data, information and findings, including significant community health needs;
- Community resources potentially available to help address identified needs; and
- Discussion of impacts of actions taken by the hospital since the preceding CHNA.

Additional detail about the needs assessment process and findings can be found in the CHNA report, which is publicly available at <https://www.dignityhealth.org/north-state/locations/mercy-mtshasta/about-us/community-benefit> or upon request at the hospital's Community Health office.

### Significant Health Needs

The most recent community health needs assessment identified the following significant community health needs:

- Access to Care  
Accessing adequate health care is a challenge in rural communities across the state. Issues accessing care have been noted in all communities within Siskiyou County and in nearly all health disciplines, including primary care, specialty care, dental, and mental health. Physician recruitment and retention is especially difficult for rural areas. With rural areas payer mix being less ideal along with a smaller population to support the physician's practice, shortages are a continuous challenge.
- Maternal and Child Health  
In a county health profile report published by the Family Health Outcomes Project in 2018, many maternal and child health issues were brought to light. Among the most concerning statistics were a high infant mortality rate, high domestic violence call rate, child abuse and neglect, and childhood food insecurity rate.
- Mental Health  
Access to mental health services is extremely difficult and has many barriers to entry. A severe shortage of mental health providers leaves those in need with long wait times for appointments



and lack of treatment options. With the majority of mental health and behavioral health services being located in the county seat of Yreka, transportation to appointments also presents a significant barrier for those who live in other communities within the county. Long distances through the mountainous terrain limit public transportation options, when available, and cost limits accessibility for low-income individuals.

### Significant Needs the Hospital Does Not Intend to Address

The hospital intends to take actions to address all of the prioritized significant health needs in the CHNA report, both through its own programs and services and with community partners. Lists and descriptions of those planned actions are included in this report.

## 2021 Report and 2022 Plan

This section presents strategies and program activities the hospital is delivering, funding or on which it is collaborating with others to address significant community health needs. It summarizes actions taken in FY21 and planned activities for FY22, with statements on anticipated impacts, planned collaboration, and patient financial assistance for medically necessary care. Program Digests provide detail on select programs' goals, measurable objectives, expenses and other information.

This report specifies planned activities consistent with the hospital's mission and capabilities. The hospital may amend the plan as circumstances warrant. For instance, changes in significant community health needs or in community assets and resources directed to those needs may merit refocusing the hospital's limited resources to best serve the community.

The anticipated impacts of the hospital's activities on significant health needs are summarized below, and for select program initiatives are stated in Program Digests. Overall, the hospital anticipates that actions taken to address significant health needs will: improve health knowledge, behaviors, and status; increase access to needed and beneficial care; and help create conditions that support good health.

The hospital works to evaluate impact and sets priorities for its community health programs in triennial Community Health Needs Assessments.



## Creating the Community Benefit Plan

Mercy Medical Center Mt. Shasta is dedicated to improving community health and delivering community benefit with the engagement of its management team, board, clinicians and staff, and in collaboration with community partners.

A broad approach with multi-disciplinary teams is taken when planning and developing initiatives to address priority health issues. During the initiative inception phase,

Community Health Staff engages a core internal team that may include clinical staff, care coordinators and social workers, members of leadership teams at both the service area and local levels from Mission Integration, IT, Legal, Administration, Strategy, and Finance. These core teams help shape initiatives, provide internal perspective on issues, and help define appropriate processes, procedures and methodologies for measuring outcomes. In addition to internal core teams, Mercy Medical Center Mt. Shasta also widens the scope of program design and elicits design input, feedback, recommendations, and concerns from the North State Community Board; Mercy Medical Center Mt. Shasta Advisory Council; and Local Area Community Grant Committee.



## Impact of the Coronavirus Pandemic

In response to the Coronavirus pandemic, the Hospital recognized and responded to the ongoing health and basic needs of our community members. Hospital staff engaged in communication meetings with the Siskiyou County Public Health Department which allowed the hospital to respond promptly to the evolving needs of the community. Community Health staff continued to collaborate with local community partners, collaboratives, and coalitions to provide Coronavirus related patient education for dissemination to their clients and family members. The Hospital's marketing team continued to provide an essential role in disseminating frequent messaging through the use of social media, to keep community residents aware of any changes in the facility as a result of the pandemic. Additionally, in close coordination with Siskiyou County Public Health, the hospital has been active in promoting, staffing, and coordinating community vaccination efforts for all community members.

In FY22, the Hospital plans to continue to monitor and respond to the community health needs of the community through creating capacity to meet the acute care needs of community members, as well as, leverage the community grants program to help our community partners meet the needs of their clients..

## Report and Plan by Health Need

The tables below present strategies and program activities the hospital has delivered or intends to deliver to help address significant health needs identified in the community health needs assessment.

They are organized by health need and include statements of strategy and program impact, and any collaboration with other organizations in our community.



## Health Need: Access to Care

Strategy or Program Name	Summary Description	Active FY21	Planned FY22
Health Screening	Free Mammogram Program (Ultrasound and MRI)	<input checked="" type="checkbox"/>	<input checked="" type="checkbox"/>
Transportation Assistance	Van service, taxi vouchers or bus tokens provided to patients who need assistance with access to our facilities.	<input checked="" type="checkbox"/>	<input checked="" type="checkbox"/>
Podiatrist	The hospital has secured two Podiatrist to come to one of our clinics one day per month in response to the number one stated need by elders in the community in our recent CHNA	<input checked="" type="checkbox"/>	<input checked="" type="checkbox"/>
Enhance access to Primary and Specialty Care	Continue to work with community stakeholders to review the 2019 Community Health Needs Assessment and identify the key issues to maximize the quality of ongoing health initiatives.	<input checked="" type="checkbox"/>	<input checked="" type="checkbox"/>
Patient Financial Assistance	Provide financial assistance to eligible patients who do not have the capacity to pay for medically necessary health care services, and who otherwise may not be able to receive these services.	<input checked="" type="checkbox"/>	<input checked="" type="checkbox"/>

**Impact:** Improving health care services includes increasing access to and use of evidence-based preventive services. Through prevention efforts and improvements in accessing health care services community members will have better health outcomes, fewer disparities, and lower costs.

**Collaboration:** Mercy Medical Center Mt. Shasta will continue to partner with other local organizations that respond to the health needs of our community. Community-based collaborations have been a priority in past years and the hospital will continue to drive community benefit efforts in the future.



### Health Need: Maternal and Child Health

Strategy or Program Name	Summary Description	Active FY21	Planned FY22
Prenatal Health	<ul style="list-style-type: none"> <li>Lactation Counseling Services</li> <li>Prenatal Breastfeeding Classes</li> </ul>	☒	☒
Community Collaboration	Collaboration with First Five Book Program in Rural Health Clinic Setting	☒	☒
Community Collaboration	Partnerships with Great Northern Services Free Summer Lunch Program for children ages 18 and under	☒	☒
<b>Impact:</b> Improvements in maternal, infant and child health			
<b>Collaboration:</b> Mercy Medical Center Mt. Shasta will continue to partner with other local organizations that respond to the health needs of our community. Community-based collaborations have been a priority in past years and the hospital will continue to drive community benefit efforts in the future.			



### Health Need: Mental Health

Strategy or Program Name	Summary Description	Active FY21	Planned FY22
Tele-Psychiatry	Psychiatrists are able to provide early evaluation and psychiatric intervention via remote consultations with patients, improving access to timely quality care. Access is available to both the ED and inpatient setting.	☒	☒
Co-Occurring Substance Disorder Treatment Program	Suboxone clinic with x-waiver physicians and also Increased the number of x-waivered Emergency Room physicians	☒	☒
Mental Health Specialist	Clinical Psychiatrist in Rural Health Clinic	☒	☒
Mental Health Task Force	Continue to partner and meet quarterly with Professional Mental Health Countywide task force to develop best practices with known local resources	☒	☒

Community Health Education	Bereavement/Grief Support Group	<input checked="" type="checkbox"/>	<input checked="" type="checkbox"/>
Behavioral Evaluation Services	Coordinate behavioral health evaluations with Siskiyou County Behavioral Health Department to assess patient needs and risks and to provide referrals 24-hours daily, 365 days per year to anyone who presents at the hospital Emergency Departments. These services are provided regardless of the individual's ability to pay or eligibility for care at our facility.	<input checked="" type="checkbox"/>	<input checked="" type="checkbox"/>

**Impact:** The hospital's initiatives to address mental/behavioral health and co-occurring substance abuse have anticipated results in: increasing the community's knowledge of common mental health issues and how to deal with them, empowering the community to understand prescription drug abuse, and support projects that will impact the community's access to mental/behavioral health services.

**Collaboration:** Mercy Medical Center Mt. Shasta will continue to partner with other local organizations that respond to the health needs of our community. Community-based collaborations have been a priority in past years and the hospital will continue to drive community benefit efforts in the future.

## Community Grants Program

One important way the hospital helps to address community health needs is by awarding financial grants to non-profit organizations working together to improve health status and quality of life. Grant funds are used to deliver services and strengthen service systems, to improve the health and well-being of vulnerable and underserved populations.


In FY21, the hospital awarded the grants below totaling \$28,324. Some projects also may be described elsewhere in this report.

Grant Recipient	Project Name	Amount
Great Northern Services	Child Nutrition Services	\$10,000
Siskiyou Outdoor Recreation Alliance	Equipment Lending Library	\$18,324




## Program Digests

The following pages include Program Digests describing key programs and initiatives that address one or more significant health needs. The digests include program descriptions and intervention actions, statements of which health needs are being addressed, any planned collaboration, and program goals and measurable objectives.

 <b>Access to Care</b>	
Significant Health Needs Addressed	<input checked="" type="checkbox"/> Access to Care <input type="checkbox"/> Maternal and Child Health <input type="checkbox"/> Mental Health
Program Description	Improvement in access to health care services and use of evidence-based preventive services.
Community Benefit Category	A – Community Health Improvement Services
FY 2021 Report	
Program Goal / Anticipated Impact	Through prevention efforts and improvements in accessing health care services community members will have better health outcomes, fewer disparities, and lower costs.
Measurable Objective(s) with Indicator(s)	Leverage community resources and create alignment among partners to increase community capacity and additional access to healthcare services
Intervention Actions for Achieving Goal	<ul style="list-style-type: none"> <li>● Continue to offer the Free Mammogram Program (Ultrasound and MRI)</li> <li>● Continue to recruit health professionals and physicians to Rural Health Clinics to increase community capacity for accessing healthcare services in the community</li> <li>● Continue active participation on the Siskiyou Health Collaborative and assist with the development of a more robust healthcare workforce in Siskiyou County</li> </ul>
Collaboration	Siskiyou Health Collaborative
Performance / Impact	<ul style="list-style-type: none"> <li>● The Free Mammogram Program (Ultrasound and MRI) was offered in FY21. Due to COVID and certain services now being covered by insurance, there were only 9 women served through this program             <ul style="list-style-type: none"> <li>○ 4 diagnostic mammograms</li> <li>○ 3 ultrasounds</li> <li>○ 1 screening mammogram</li> <li>○ 1 CT</li> </ul> </li> </ul>

	<ul style="list-style-type: none"> <li>Continued to recruit health professionals and physicians to Rural Health Clinics to increase community capacity for accessing healthcare services in the community including a general surgeon.</li> <li>Continued to be an active participant on the Siskiyou Health Collaborative to assist with the development of a more robust healthcare workforce in Siskiyou County</li> </ul>
Hospital's Contribution / Program Expense	\$1,200
<b>FY 2022 Plan</b>	
Program Goal / Anticipated Impact	Through prevention efforts and improvements in accessing health care services community members will have better health outcomes, fewer disparities, and lower costs.
Measurable Objective(s) with Indicator(s)	Leverage community resources and create alignment among partners to increase community capacity and additional access to healthcare services
Intervention Actions for Achieving Goal	<ul style="list-style-type: none"> <li>Community health staff will work with Siskiyou Public Health and other community partners to promote the mental and social well-being of Siskiyou County through the suicide prevention project. Intervention actions for FY22 will include: <ul style="list-style-type: none"> <li>Identifying and supporting people at risk</li> <li>Establishing peer norm programs/promote access to online peer norm programs</li> <li>Supporting school-based mental health training</li> <li>Completion of in-depth provider and services resource list</li> </ul> </li> </ul>
Planned Collaboration	Siskiyou Health Collaborative, Siskiyou Public Health, Fairchild Medical Center, Siskiyou County Behavioral Health, and Mt. Valleys Health Centers

 <b>Maternal and Child Health</b>	
Significant Health Needs Addressed	<input type="checkbox"/> Access to Care <input checked="" type="checkbox"/> Maternal and Child Health <input type="checkbox"/> Mental Health
Program Description	Maternal Opioid Training for Maternal and Child Health Providers
Community Benefit Category	A – Community Health Improvement Services


**FY 2021 Report**

Program Goal / Anticipated Impact	A reduction in opioid exposed infants at birth or in early childhood
Measurable Objective(s) with Indicator(s)	Increase healthcare provider awareness of the number of opioid dependent mothers in Siskiyou County
Intervention Actions for Achieving Goal	<ul style="list-style-type: none"> <li>● Provide Safe sleep Education to the community to help reduce infant mortality rates</li> <li>● Provide Lactation Counseling Services; Prenatal Breastfeeding Classes; and Child Birth Classes</li> <li>● Continue Partnership with Great Northern Services for the Free Summer Lunch Program for children ages 18 and under</li> <li>● Collaborate with First 5 Siskiyou to bring Adverse Childhood Experiences (ACEs) educational opportunities to community</li> </ul>
Collaboration	Great Northern Services
Performance / Impact	<ul style="list-style-type: none"> <li>● OB care coordinator reaches out to high risk OB patients. During the patient’s initial OB visit our care coordinator completes training and education</li> <li>● The hospital offered breastfeeding support groups throughout FY21 with 15 individuals participating. Other classes were put on hold due to the impact of the Coronavirus.</li> <li>● Great Northern Services received a community grant to continue offering the Summer Lunch Program for the community throughout FY21.</li> <li>● The Northern California Adverse Childhood Experiences FY21 summit information was shared with Siskiyou First 5 Shasta.</li> </ul>
Hospital’s Contribution / Program Expense	\$12,000

**FY 2022 Plan**

Program Goal / Anticipated Impact	Improve the health and well-being of mothers, infants, and children.
Measurable Objective(s) with Indicator(s)	Provide education and skills management to increase community awareness and improve health behaviors that affect health, wellness, and quality of life.
Intervention Actions for Achieving Goal	<ul style="list-style-type: none"> <li>● Provide Safe sleep Education to the community to help reduce infant mortality rates</li> <li>● Provide Lactation Counseling Services; Prenatal Breastfeeding Classes; and Child Birth Classes</li> </ul>

	<ul style="list-style-type: none"> <li>● Continue Partnership with Great Northern Services for the Free Summer Lunch Program for children ages 18 and under</li> <li>● Collaborate with First 5 Siskiyou to bring Adverse Childhood Experiences (ACEs) educational opportunities to community</li> </ul>
Planned Collaboration	Great Northern Services

 <b>Mental Health</b>	
Significant Health Needs Addressed	<input type="checkbox"/> Access to Care <input type="checkbox"/> Maternal and Child Health <input type="checkbox"/> Mental Health
Program Description	The hospital's initiatives to address access to behavioral health services are anticipated to result in: expanded access to behavioral health services; increased knowledge about how to access and navigate the health care system; and reduce barriers to care.
Community Benefit Category	A – Community Health Improvement Services
FY 2021 Report	
Program Goal / Anticipated Impact	Expanded access to behavioral health services
Measurable Objective(s) with Indicator(s)	Expand access to behavioral health services in outpatient rural clinics and increase availability of services in the community measured
Intervention Actions for Achieving Goal	<ul style="list-style-type: none"> <li>● Continue offering Suboxone clinic with x-waiver physicians</li> <li>● Contract with Telemed 2 U to provide additional behavioral health services for the community</li> </ul>
Collaboration	Siskiyou Against Rx Addiction, Senior Life Solutions, and other community providers
Performance / Impact	<ul style="list-style-type: none"> <li>● 30 individuals were served in the Suboxone clinic</li> <li>● Hospital contracted with Telemed 2 U and is now able to make electronic referrals for Behavioral Health</li> </ul>
Hospital's Contribution / Program Expense	\$0

FY 2022 Plan	
Program Goal / Anticipated Impact	Expand access to behavioral health services for all community members and decrease recreational drug use
Measurable Objective(s) with Indicator(s)	Measure impact by documenting the number of patient encounters; collecting baseline data around “no show” rates
Intervention Actions for Achieving Goal	<ul style="list-style-type: none"> <li>• Assist with discomfort/withdrawal, identify reasons for relapse</li> <li>• Sustain recovery, behavioral health/counseling, continued therapy and education</li> </ul>
Planned Collaboration	Siskiyou Against Rx Addiction, Senior Life Solutions, and other community providers

### Other Programs and Non-Quantifiable Benefits

The hospital delivers community programs, services and non-quantifiable benefits in addition to those described elsewhere in this report. Like those programs and initiatives, the ones below are a reflection of the hospital’s mission and its commitment to improving community health and well-being.

**Scholarships**

Each year, Mercy Medical Center Mt. Shasta provides scholarships for graduating high school seniors from Siskiyou County on a competitive basis who have been accepted into health career tracks at the college and university level. This year, we received a large number of applications from highly qualified students and we awarded 3 scholarships in the amount of \$1000 each. These students will begin their studies in Fall 2021 at Snow College, Seattle University, and CSU Fullerton. They have chosen careers in nursing, kinesiology, biotechnology, and molecular biology.

**Non-Quantifiable Benefits**

Mercy Mt. Shasta staff and volunteers collected 28 cases of food, \$400 in cash donations, and \$100 in gift card donations during their annual Fall Food Drive. All donations were delivered to the St. Vincent DePaul pantry to be distributed to those in need in the community.

Support of many environmental “green projects” including recycling aluminum, tin, glass, newspapers, batteries, plastic and cardboard. In FY2021 we recycled approximately 52% of our total waste. With these efforts it is estimated that Mercy Medical Center Mt. Shasta has kept 82.8 tons of recyclable products out of the landfill.

In FY2021, the “Sisters Emergency Fund” which is funded by contributions by staff members and the community provided gas vouchers, next-stop STAGE Bus passes, several Greyhound Bus tickets, overnight accommodation in a local motel, meal vouchers, and food assistance for patients and family members at times of need and emergency.

The staff of Mercy Medical Center Mt. Shasta, in partnership with CASA (Court Appointed Special Advocates) provided Christmas gifts (valued at \$25 each) in December 2020 for 78 children in foster care as well as their foster care siblings.



## Economic Value of Community Benefit

The economic value of all community benefit is reported at cost. Patient financial assistance (charity care) reported here is as reported to the Office of Statewide Health Planning and Development in Hospital Annual Financial Disclosure Reports, as required by Assembly Bill 204. The community benefit of Medicaid and other means-tested programs is calculated using a cost-to-charge ratio to determine costs, minus revenue received for providing that care. Other net community benefit expenses are calculated using a cost accounting methodology. Restricted offsetting revenue for a given activity, where applicable, is subtracted from total expenses to determine net benefit in dollars.

### 152 Mercy Medical Center (Mt. Shasta)

#### Complete Summary - Classified Including Non Community Benefit (Medicare)

For period from 7/1/2020 through 6/30/2021

	Persons	Expense	Revenue	Net Benefit	% of Expense
<b>Benefits for Poor</b>					
<b>Financial Assistance</b>	4,458	1,265,200	0	1,265,200	1.9%
<b>Medicaid</b>	10,099	14,059,634	11,424,352	2,635,282	3.9%
<b>Community Services</b>					
E - Cash and In-Kind Contributions**	2	75,052	111,399	0	0.0%
G - Community Benefit Operations	0	14,968	0	14,968	0.0%
<b>Totals for Community Services</b>	<b>2</b>	<b>90,020</b>	<b>111,399</b>	<b>(21,379)</b>	<b>0.0%</b>
<b>Totals for Poor</b>	<b>14,559</b>	<b>15,414,854</b>	<b>11,535,751</b>	<b>3,879,103</b>	<b>5.8%</b>
<b>Benefits for Broader Community</b>					
<b>Community Services</b>					
A - Community Health Improvement Services	128	20,341	0	20,341	0.0%
E - Cash and In-Kind Contributions	14	20,671	0	20,671	0.0%
F - Community Building Activities	1	74	0	74	0.0%
<b>Totals for Community Services</b>	<b>143</b>	<b>41,086</b>	<b>0</b>	<b>41,086</b>	<b>0.1%</b>
<b>Totals for Broader Community</b>	<b>143</b>	<b>41,086</b>	<b>0</b>	<b>41,086</b>	<b>0.1%</b>
<b>Totals - Community Benefit</b>	<b>14,702</b>	<b>15,455,940</b>	<b>11,535,751</b>	<b>3,920,189</b>	<b>5.8%</b>
<b>Medicare</b>	<b>19,569</b>	<b>28,881,635</b>	<b>21,987,559</b>	<b>6,894,076</b>	<b>10.3%</b>
<b>Totals with Medicare</b>	<b>34,271</b>	<b>44,337,575</b>	<b>33,523,310</b>	<b>10,814,265</b>	<b>16.1%</b>

\*\*Consistent with IRS instructions and CHA guidance, Cash and In-kind Contributions is reported at \$0 net benefit because offsetting revenue was greater than expense in FY21. This was due to the return of a large donation in the fiscal year. Net gain for cash and in-kind contributions is still included in all "Totals" calculations, however.

## Hospital Board and Committee Rosters

**FY 2022**  
**DIGNITY HEALTH NORTH STATE SERVICE AREA**  
**COMMUNITY BOARD MEMBERS**

Eva, Jimenez, Chairperson

Riico Dotson, M.D., Secretary

Todd Strumwasser, M.D., SVP Northern California Division

Diane Brickell

Sister Clare Marie Dalton

Ryan Denham

Sandra Dole

Alan Foley

Nikita Gill, M.D.

David Holst, M.D.

Paul Johnson, M.D.

Hillary Lindauer

Sister Bridget McCarthy

Patrick Quintal, M.D.

Samuel Van Kirk, D.O.

Any communications to Board Members should be made in writing and directed to:

Michelle Burke, Executive Assistant  
Dignity Health North State  
P.O. Box 496009  
Redding, CA 96049-6009  
(530) 225-6103  
(530) 225-6118 fax

**Mercy Medical Center Mt. Shasta  
COMMUNITY ADVISORY COUNCIL – FY2022**

- Rodger Page, President, Mercy Medical Center Mt. Shasta
- Diane Brickell, McCloud, Health Clinic Board member, and Dignity Health North State Service Area Community Board Member
- Keith Cool, Business Owner
- Lori Harch, School Board member
- James Langford, retired teacher
- Russ Porterfield, Business Owner
- Mike Rodriguez, Mt. Shasta City Parks & Recreation Director
- Norma Stone, McCloud area representative, retired Mercy employee
- Karen Teuscher, Community Member, Past Dignity Health North State Service Area Community Board Member

Other Participants:

- Elizabeth Pulatie, CNE
- Joyce Zwanziger, MMCMS Director, Business Operations
- Alisa Johnson, Mercy Foundation North