

St. Mary's Medical Center's Acute Rehabilitation Unit is committed to exceptional patient care. We do this in a way that is effective, efficient and satisfactory. The following report addresses

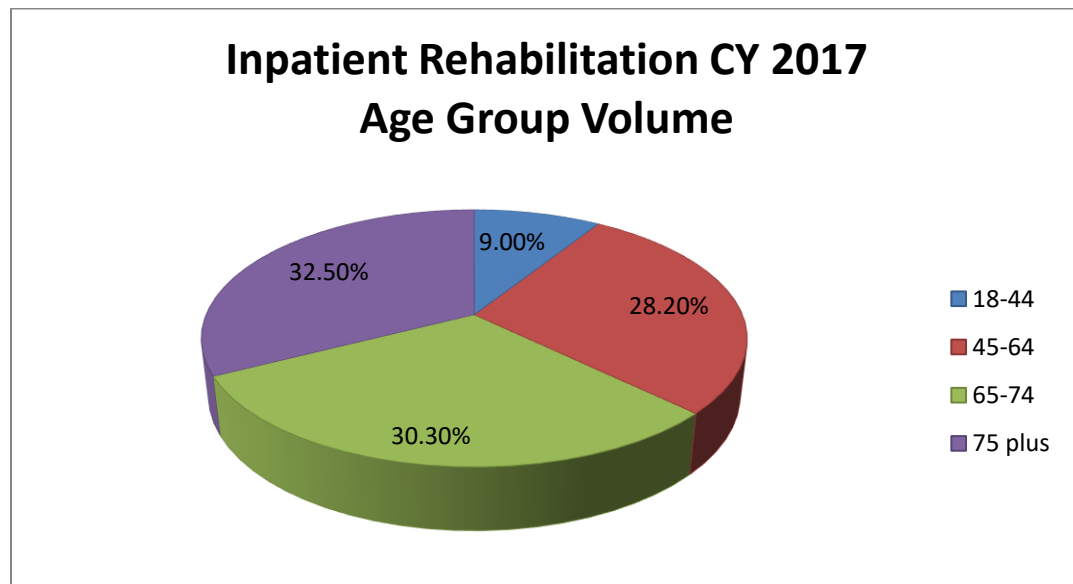
- How much our patients improved
- How long they stayed on our unit
- Where they went after staying on our unit
- Their ability to lead a productive life

Thank you for giving us this opportunity to provide you with the care that you need at this point in your recovery. If you have any questions, feel free to call (415) 750-4991.

In 2017, we discharged a total of 277 patients from our unit. Here is the data that shows who our patients were for the past year, including the conditions or diagnosis they had:

Diagnosis	Number of Patients per Category
Stroke	86
Traumatic Brain Injury	4
Non-Traumatic Brain Injury	56
Neurological Cases	14
Amputation	5
Other Orthopedic	50
Traumatic Spinal Cord Injury	3
Non Traumatic Spinal Cord Injury	16
Joint Replacement	12
Hip fracture	12
Other Cases	19
Total – All Patients Discharged in 2016	277

Most of the patients discharged from the unit in 2017 belonged to the 65+ plus age range (69.0%) followed by 45-64 (26.5%) then 18-44 (4.5%).

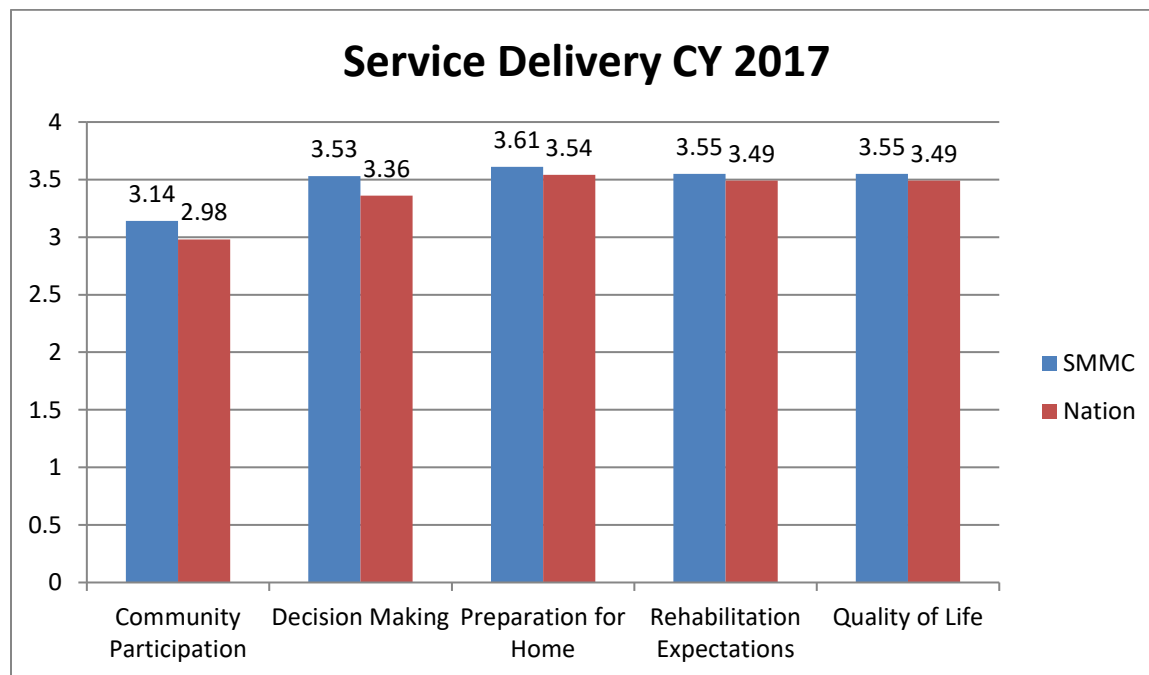


Patient Satisfaction

Patients discharged to the community from our Inpatient Rehabilitation Facility receive a Patient Experience questionnaire via Press Ganey. Starting in July, 2017, all Dignity Health IRFs began using the Press Ganey Inpatient Rehabilitation questionnaire with a specific focus on the needs of rehabilitation patients. We are proud of our results thus far.

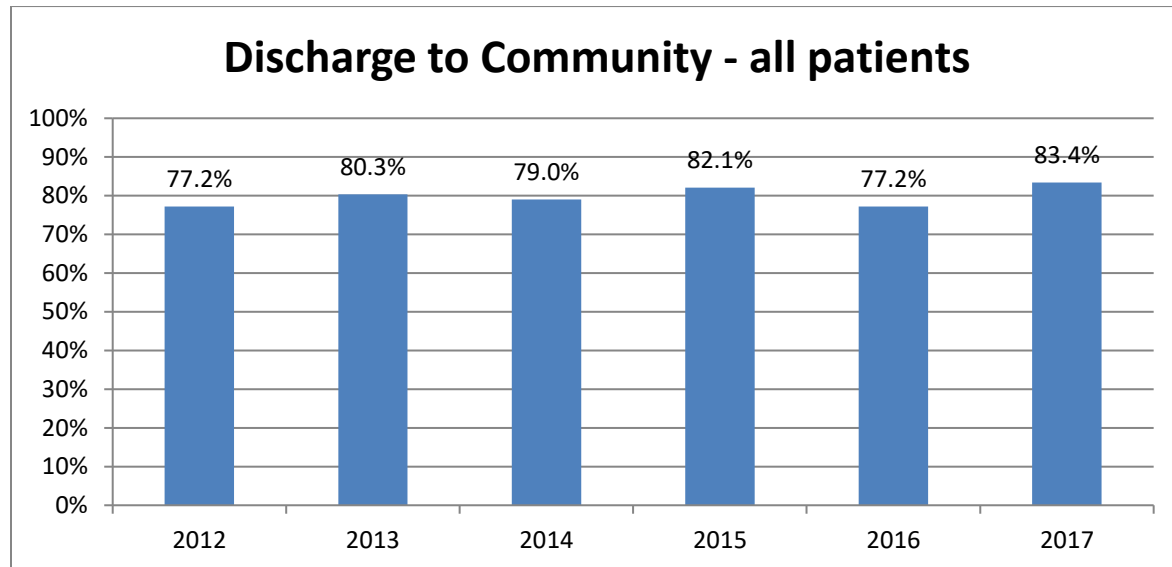
Patients discharged 7/1-12/31/17	% SCORE	%ILE RANK
Likely to recommend	95.3%	84
Nursing Care	96%	98
Physical Therapy Care	96.9%	97
Occupational Therapy Care	99.6%	99
Pain Control	96.9%	99

St. Mary's also contracts with MedTel Outcomes to call every patient from our Inpatient Rehabilitation Facility 3 months after discharge to assess the longevity of their outcomes and their overall satisfaction with our program.

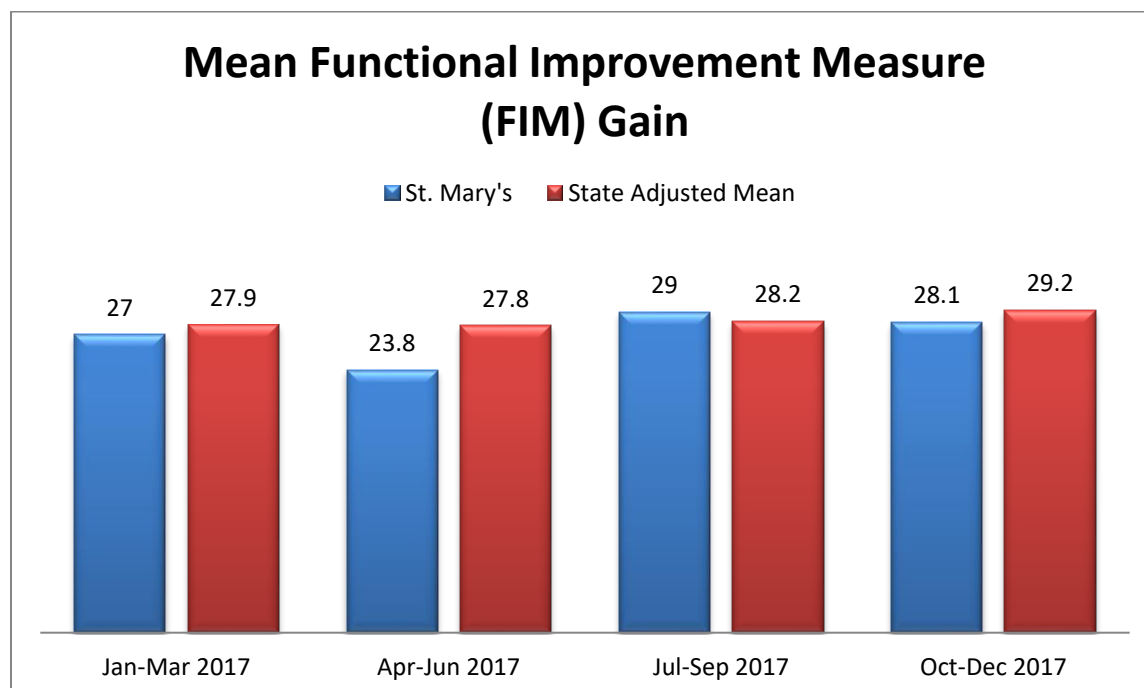


Outcomes

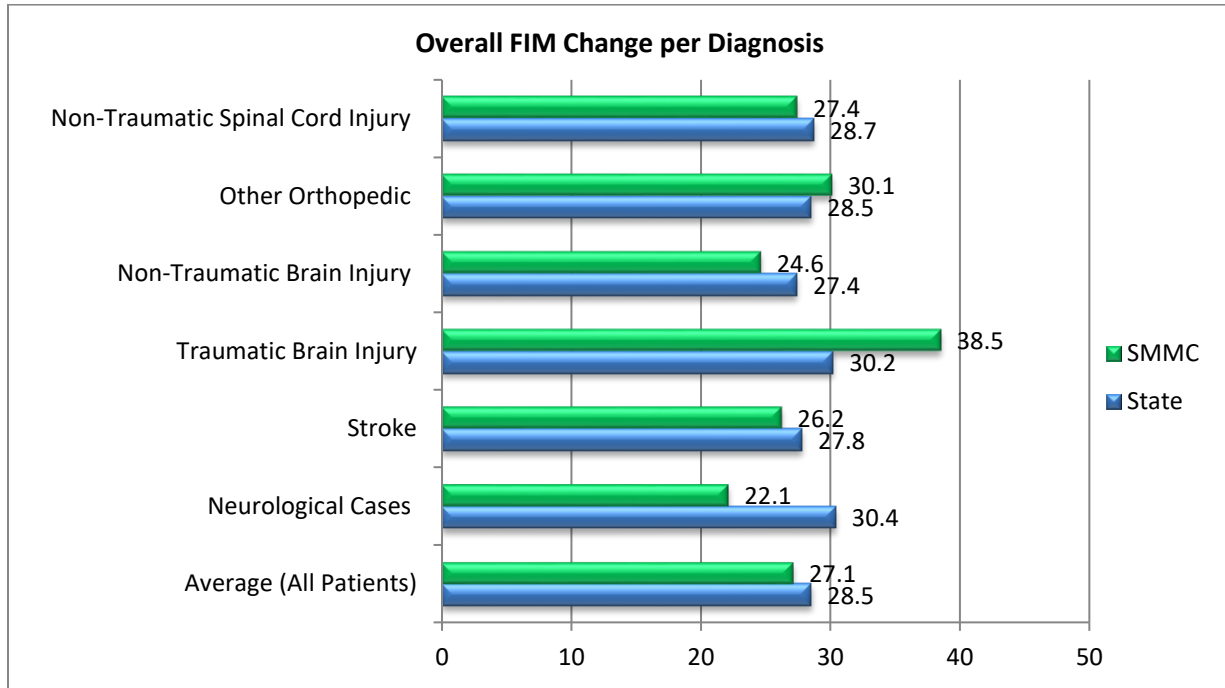
St. Mary's consistently discharges well over 75% of its patients to the home environment. Although the goal for every patient is discharge to home, for some it is not possible due to complications in medical condition or if the team does not feel discharge home would ultimately be safe. Of the 277 patients discharged from our unit in 2017, 83.4% went home.



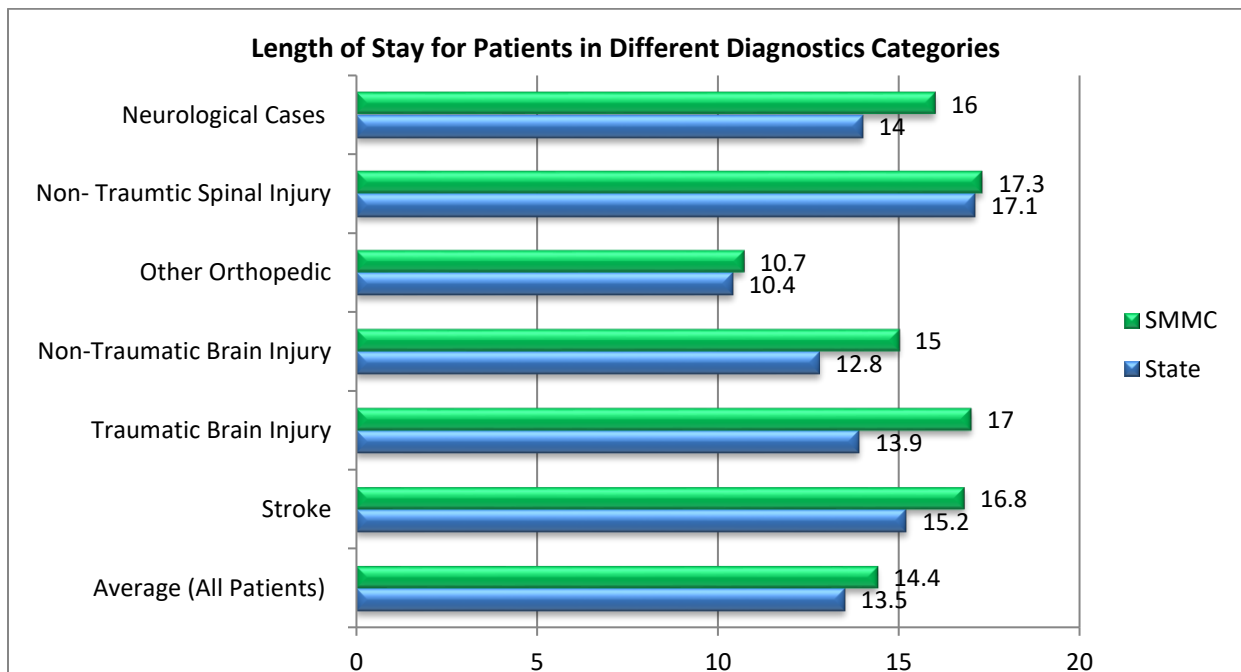
At St. Mary's, we strive for continuous improvement of our program. The FIM™ is a tool that measures a person's ability to perform 18 different types of everyday activities (like walking, bathing, dressing and communication). A score of 7 on the FIM™ means that the person is independent and will not need any help. In other words, the higher the number, the more a person is able to do. Our outcomes typically rank close to or above the state adjusted mean.



Patients who stayed on our unit in 2017 made a gain of 27.1 points on average. This number does not reflect how much medical care our patients needed because of their diagnosis.



In general, our patients were discharged from the unit in 14 days, compared to the state average of 12.7 days. The graph below also shows the length of stay per diagnosis as compared to the facilities across the state.



- Data collected from 01/01/2016 – 12/31/2016
- Benchmarking comparisons by Uniform Data System for Medical Rehabilitation and Med Tel Outcomes (01/01/2013-12/31/2013)