

Visitor Information Regarding COVID-19

Our priority is the safety and care of our patients, staff and visitors. Please follow these guidelines:

- If you are feeling sick (fever, cough, other respiratory symptoms) please return home unless seeking care.
- Please leave children under the age of 18 at home, unless seeking care for them.

Visitor Policy:

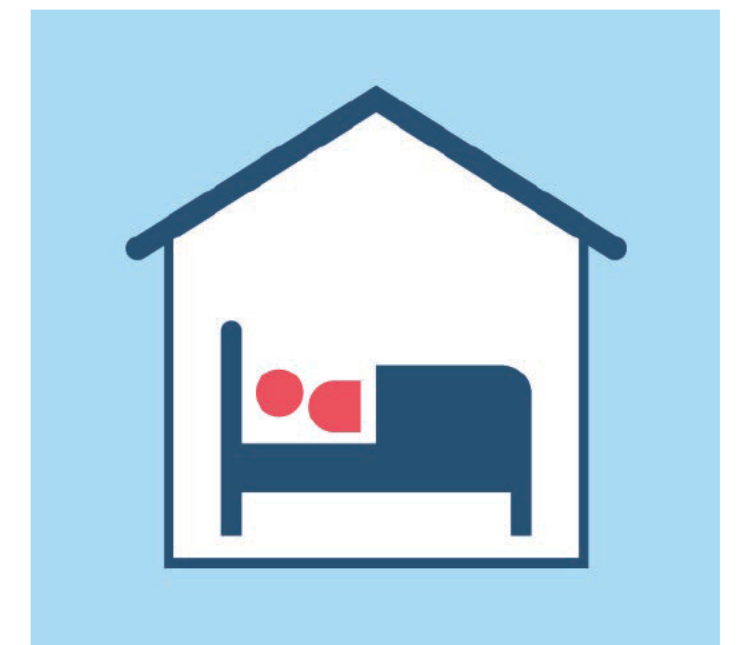
- **Visiting Hours: 7:30AM to 6:30PM**
- **Visitors that are sick will not be allowed to enter the facility unless seeking care.**
- Visitors of non-isolation patients will be limited to two adult visitors per patient per day.
- **Visitors of patients in isolation:**
 - Will be limited to one adult visitor per day
 - Will be required to wear personal protective equipment (PPE)

**For questions about visitation or patient access, please ask Security to call the patient care unit.*

In addition:

- Our health care workers who are coughing, have a fever, or feel ill are asked to stay home, unless seeking care.

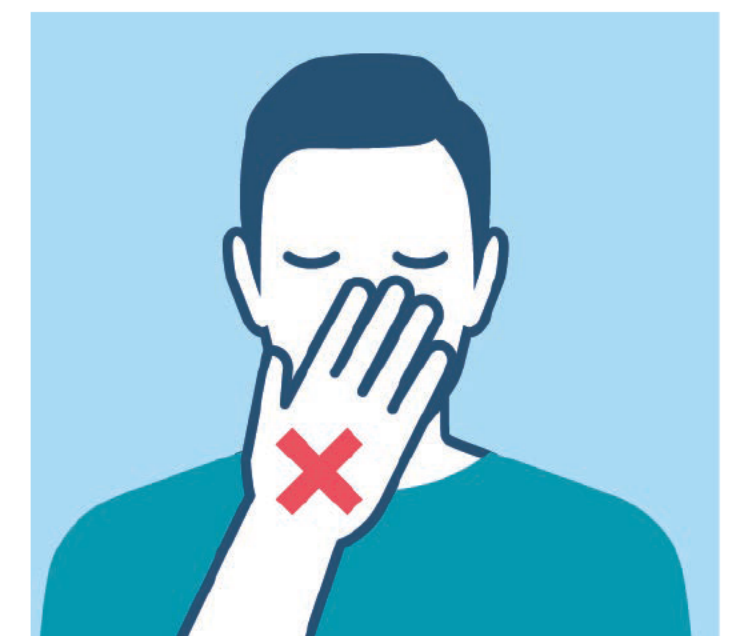
For questions about visitation or patient unit, please ask security to call the patient care floor.



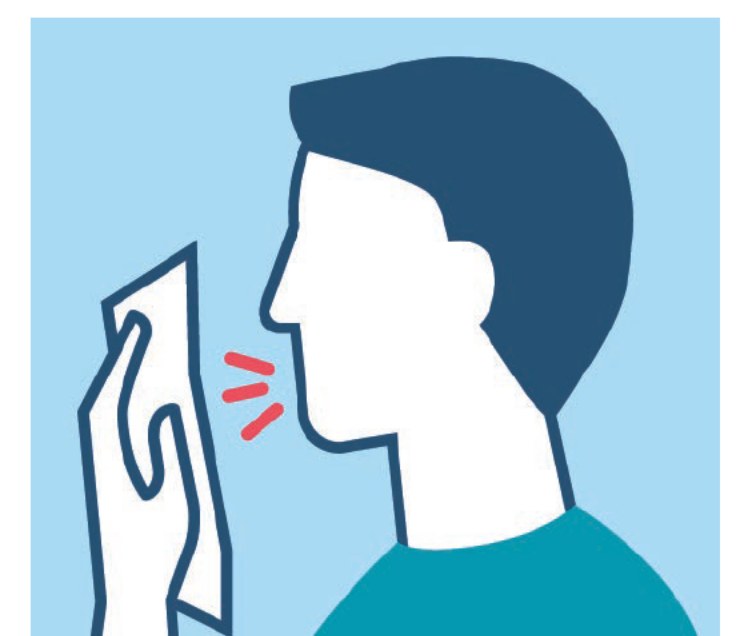
**STAY HOME
WHEN SICK**



WASH HANDS



**AVOID TOUCHING
YOUR FACE**



**COVER WITH
TISSUE**