

Mercy Medical Center Merced

Hospital HCAI ID: 106240942

Community Benefit 2025 Report and 2026 Plan



Adopted December 2025



A message from

Dale Johns, President, and Garth Pecchenino, Chair of the Dignity Health Mercy Medical Center Merced Community Board.

Dignity Health's approach to community health improvement aims to address significant health needs identified in the Community Health Needs Assessments that we conduct with community input, including from the local public health department. Our initiatives to deliver community benefit include financial assistance for those unable to afford medically necessary care, a range of prevention and health improvement programs conducted by the hospital and with community partners, and investing in efforts that address social drivers of health.

Mercy Medical Center Merced shares a commitment with others to improve the health of our community and promote health equity, and delivers programs and services to help achieve that goal. The Community Benefit 2025 Report and 2026 Plan describes much of this work. This report meets requirements in California (Senate Bill 697) that not-for-profit hospitals produce an annual community benefit report and plan. We are proud of the outstanding programs, services and other community benefits our hospital delivers, and are pleased to report to our community.

In fiscal year 2025 (FY25), Mercy Medical Center Merced provided \$58,008,215 in patient financial assistance, unreimbursed costs of Medicaid, community health improvement services and other community benefits. The hospital also incurred \$10,959,470 in unreimbursed costs of caring for patients covered by Medicare fee-for-service.

The hospital's board reviewed, approved and adopted the Community Benefit 2025 Report and 2026 Plan at its December 11, 2025 meeting.

Thank you for taking the time to review this report and plan. We welcome any questions or comments, which can be submitted using the contact information in the At-a-Glance section of this report.

Dale Johns - President
Garth Pecchenino - Chairperson, Board of Directors





Table of Contents


At-a-Glance Summary	Page 4
Our Hospital and the Community Served	Page 6
About the Hospital	Page 6
Our Mission	Page 6
Financial Assistance for Medically Necessary Care	Page 6
Description of the Community Served	Page 7
Community Assessment and Significant Needs	Page 8
Community Health Needs Assessment	Page 8
Significant Health Needs	Page 10
2025 Report and 2026 Plan	Page 12
Creating the Community Benefit Plan	Page 12
Community Health Strategic Objectives	Page 13
Report and Plan by Health Need	Page 14
Community Health Improvement Grants Program	Page 19
Program Highlights	Page 19
Other Community Health and Community Building Programs	Page 25
Economic Value of Community Benefit	Page 26
Hospital Board and Committee Rosters	Page 27

At-a-Glance Summary

Hospital HCAI ID: 106240942

Report Period Start Date: July 1, 2024 Report Period End Date: June 30, 2025

Community Served 	<p>Dignity Health Mercy Medical Center is located in Merced, California. The service area is in Merced County in the Northern San Joaquin Valley and includes the cities of Atwater, Chowchilla, Merced and Winton. The population of the service area is 186,200. Merced County is a productive agricultural area that spans from the coastal ranges to the foothills of Yosemite National Park.</p>
Economic Value of Community Benefit 	<p>\$47,226,404 in patient financial assistance, unreimbursed costs of Medicaid, community health improvement services, community grants and other community benefits</p> <p>\$10,781,811 in unreimbursed costs of caring for patients covered by Medicare fee-for-service.</p> <p>Community benefit expenses for services to vulnerable populations and to the broader community are listed by category in the Economic Value of Community Benefit section of this report.</p>
Significant Community Health Needs Being Addressed 	<p>The significant community health needs the hospital is helping to address and that form the basis of this document were identified in the hospital's most recent Community Health Needs Assessment (CHNA). Needs being addressed by strategies and programs are:</p> <ul style="list-style-type: none">• Access to health care• Birth indicators• Chronic diseases• Overweight/obesity/healthy eating/physical activity• Preventive care
FY25 Programs and Services 	<p>The hospital delivered several programs and services to help address identified significant community health needs. These included:</p> <p>The hospital intends to take several actions and to dedicate resources to these needs, including:</p> <ul style="list-style-type: none">• Access to health care – financial assistance program, primary care clinics, and Connected Community Network.• Birth indicators – education, Baby Café, prenatal yoga.• Chronic diseases – education and outreach programs for asthma, cancer, diabetes and stroke, plus tobacco cessation clinics.

	<ul style="list-style-type: none"> • Overweight/obesity/healthy eating/physical activity – Classes in yoga, Walk with Ease, and Zumba. • Preventive care – health education and community outreach, screening, support groups.
FY26 Planned Programs and Services 	FY25 programs will continue in FY26 with the intention of continuing them the next couple of years through the completion of the 2028 Community Health Needs Assessment.

This document is publicly available online at:

<https://www.dignityhealth.org/central-california/locations/mercymedical-merced/about-us/community-benefit-report>

Written comments on this report can be submitted to the Mercy Medical Center, Mission Integration Department, 333 Mercy Ave. Merced, CA 95340 or by e-mail to: mmcm-communityhealth@commonspirit.org

Our Hospital and the Community Served

About Mercy Medical Center Merced

Mercy Medical Center Merced is a Dignity Health hospital. Dignity Health is a member of CommonSpirit Health.

About the Hospital

Mercy Medical Center is a part of CommonSpirit Health, one of the largest nonprofit health systems in the U.S., with more than 2,200 care sites in 24 states coast to coast, serving patients in big cities and small towns across America.

- Located at 333 Mercy Ave., Merced, CA 95340, Mercy Medical Center is a 186-bed acute care hospital under the sponsoring congregation of the Dominican Sisters of Kenosha, Wisconsin.
- Includes outpatient facilities: Mercy Cancer Center, Mercy Outpatient Center, Mercy Medical Pavilion and Rural Health Clinics.
- Provides cardiac services, emergency services, family birth center, orthopedic services, home health, rehabilitation services, women's health, surgical services, and others.

Our Mission

As CommonSpirit Health, we make the healing presence of God known in our world by improving the health of the people we serve, especially those who are vulnerable, while we advance social justice for all.

Our Vision

A healthier future for all – inspired by faith, driven by innovation, and powered by our humanity.

Financial Assistance for Medically Necessary Care

It is the policy of CommonSpirit Health to provide, without discrimination, emergency medical care and medically necessary care in CommonSpirit hospital facilities to all patients, without regard to a patient's financial ability to pay. This hospital has a financial assistance policy that describes the assistance provided to patients for whom it would be a financial hardship to fully pay the expected out-of-pocket expenses for such care, and who meet the eligibility criteria for such



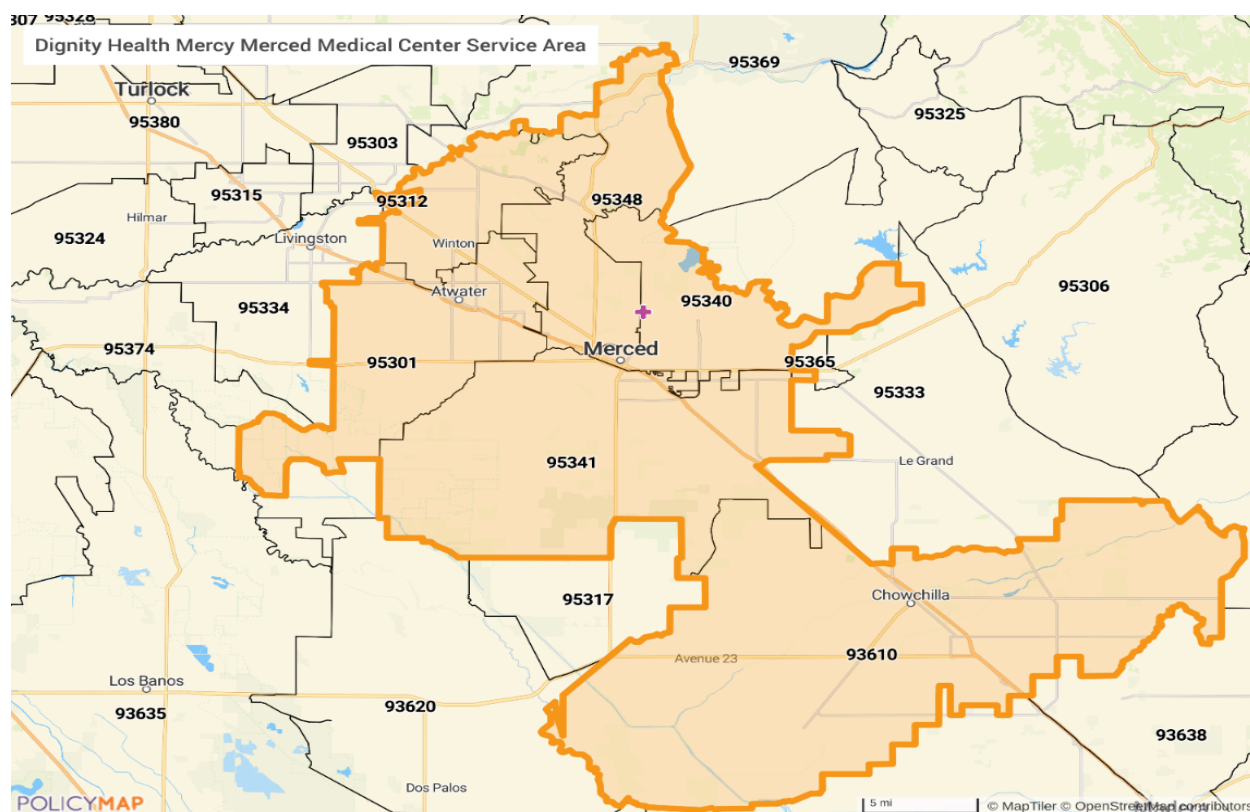
assistance. The financial assistance policy, a plain language summary and related materials are available in multiple languages on the hospital's website.

Description of the Community Served

Mercy Medical Center Merced serves 1938 square miles and houses a population of 281,202, according to the latest census estimates. . A summary description of the community is below. Additional details can be found in the CHNA report online.

The hospital service area includes the following cities, ZIP Codes and Counties.

Place	ZIP Code	County
Atwater	95301	Merced
Chowchilla	93610	Madera
Merced	95340, 95341, 95348	Merced
Winton	95388	Merced



- The population of the service area is 186,200. Children and youth, ages 0-17, make up 27.6% of the population, 61.2% are adults, ages 18-64, and 11.2% of the population are seniors, ages 65 and older. The largest portion of the population in the service area are Hispanic or Latino residents (55.6%), 28.3% are White or Caucasian residents, 8.5% are Asian residents, and 4% are Black or African American residents. 2.6% of the population are non-Latino multiracial (two-or-more races) residents, 0.4% are American Indian or Alaskan Native

residents, and 0.3% are Native Hawaiian or Pacific Islander residents. Those who identify with a race and ethnicity not listed represent 0.3% of the population.

- In the hospital service area, 25.3% of adults ages 25 and older lack a high school diploma, which is higher than the state rate (15.6%). 16.2% of area adults have a bachelor's or higher degree.
- The U.S. Health Services Administration (HRSA) designates medically underserved areas/populations (MUA) as areas or populations having too few primary care providers, high infant mortality, high poverty, or a high elderly population. Madera County, including the Chowchilla area, and part of Merced County east of Merced, known as the 'Planada Le Grand Service Area' are designated as Medically Underserved Areas (MUAs) for primary care.
- There are three categories of Health Professions Shortage Area (HPSA) designations based on the health discipline that is experiencing a shortage: 1) primary medical, 2) dental, and 3) mental health. The primary factor used to determine a HPSA designation is the number of health professionals relative to the population with consideration of high need. For primary care, the Atwater and Chowchilla areas are designated as HPSAs, as is the Merced/Merced Southwest area for low-income residents, and the Le Grand/Planada area for the Medicaid eligible population. The Chowchilla area is designated as an HPSA for Medicaid eligible residents for dental health, and all of Merced and Madera Counties are designated as HPSAs for mental health.

Community Assessment and Significant Needs

The hospital engages in multiple activities to conduct its community health improvement planning process. These include, but are not limited to, conducting a Community Health Needs Assessment with community input at least every three years, identifying collaborating community stakeholder organizations, describing anticipated impacts of program activities and measuring program indicators.

Community Health Needs Assessment

The health issues that form the basis of the hospital's community benefit plan and programs were identified in the most recent CHNA report, which was adopted in April 2025. The hospital makes the CHNA report widely available to the public online and a written copy is available upon request.

CHNA web address:

<https://www.dignityhealth.org/central-california/locations/mercymedical-merced/about-us/community-benefit-report>

The CHNA contains several key elements, including:

- Description of the assessed community served by the hospital;
- Description of assessment processes and methods;
- Presentation of data, information and findings, including significant community health needs;
- Community resources potentially available to help address identified needs; and
- Discussion of impacts of actions taken by the hospital since the preceding CHNA.

Community Groups that Attended or Engaged with the CHNA:

- Livingston Community Health
- United Way of Merced County
- Valley Children's Olivewood Pediatrics Practice
- Lifeline CDC
- Merced County Human Services Agency
- Ace Overcomers
- Central Valley Alliance for Health
- Castle Family Health Centers
- Merced County Public Health
- First 5 Merced County
- Merced County Food Bank
- Community Initiatives for Collective Impact
- Merced County Department of Public Health
- Merced City School District
- Merced County Behavioral Health and Recovery Services

Vulnerable Populations Represented by These Groups: Top 10 Disparities as identified in Health Equity Report September 2025

- HCAI All-Cause Unplanned 30-day Hospital Readmission Rate
 - Age 50-64
 - Age 65 and Older
 - Age 35-49
 - Expected Payor - Medicare
 - Expected Payor - Medicaid
 - Race and/or Ethnicity - Black or African American
 - Sex Assigned at Birth - Male
 - Race and/or Ethnicity - White
 - Race and/or Ethnicity - Asian
- HCAI All-Cause Unplanned 30 day Hospital Readmission Rate, Stratified by behavioral health diagnosis
 - Sex Assigned at Birth - Male

This community benefit report also includes programs delivered during fiscal year 2025 that were responsive to needs prioritized in the hospital's previous CHNA report.

Significant Health Needs

The CHNA identified the significant needs in the table below, which also indicates which needs the hospital intends to address. Identified needs may include specific health conditions, behaviors and health care services, and also health-related social needs that have an impact on health and well-being.

Significant Health Need	Description	Intend to Address?
Access to care	Access to health care refers to the availability of primary care, specialty care, vision care and dental care services. Health insurance coverage is considered a key component to ensure access to health care. Barriers to care can include lack of transportation, language and cultural issues.	<input checked="" type="checkbox"/>
Birth Indicators	Poor pregnancy and birth outcomes include low birthweight, preterm births and infant mortality. These are associated with late or no prenatal care, unplanned pregnancy, cigarette smoking, alcohol and other drug use, being HIV positive, obesity, maternal age, and poor nutrition.	<input checked="" type="checkbox"/>
Chronic Diseases	A chronic disease or condition usually lasts for three months or longer and may get worse over time. Chronic diseases can usually be controlled but not always cured. The most common types of chronic diseases are cancer, heart disease, stroke, diabetes, and arthritis.	<input checked="" type="checkbox"/>
Economic insecurity	Economic insecurity is correlated with poor health outcomes. People with low incomes are more likely to have difficulty accessing health care, have poor-quality health care, and seek health care less often.	
Food Insecurity	The USDA defines food insecurity as limited or uncertain availability of nutritionally adequate foods or an uncertain ability to acquire foods in socially acceptable ways.	
Housing and homelessness	Homelessness is known as a state of being unhoused or unsheltered and is the condition of lacking stable, safe, and adequate housing.	
Mental Health	Mental health includes our emotional, psychological, and social well-being. It affects how we think, feel, and act.	

Significant Health Need	Description	Intend to Address?
Overweight and obesity	Overweight and obesity are common conditions that are defined as the increase in size and amount of fat cells in the body. Obesity is a chronic health condition that raises the risk for chronic diseases. Overweight and obesity are linked to a lack of physical activity and unhealthy eating habits.	<input checked="" type="checkbox"/>
Preventive Care	Preventive practices refer to health maintenance activities that help to prevent disease. For example, preventive care includes vaccines, routine health screenings (mammogram, colonoscopy, Pap smear) and injury prevention strategies.	<input checked="" type="checkbox"/>
Substance Use	Substance use is the use of tobacco products, illegal drugs, prescription drugs, over-the-counter drugs or alcohol. Excessive use of these substances or use for purposes other than those for which they are meant to be used, can lead to physical, social or emotional harm.	
Violence and injury prevention	Violent crimes include homicide, rape, robbery and assault. Property crimes include burglary, larceny and motor vehicle theft. Injuries are caused by accidents, falls, hits, and weapons, among other causes.	

Significant Needs the Hospital Does Not Intend to Address

Taking existing hospital and community resources into consideration, Mercy Medical Center will not directly address the remaining significant health needs identified in the CHNA, which include economic insecurity, food insecurity, housing and homelessness, mental health, substance use and violence and injury prevention.

Knowing there are not sufficient resources to address all the community health needs, Mercy Medical Center chose to concentrate on those health needs that can most effectively be addressed given the organization's areas of focus and expertise. The hospital has insufficient resources to effectively address all the identified needs and, in some cases, the needs are being addressed by others in the community.

2025 Report and 2026 Plan

This section presents strategies and program activities the hospital is delivering, funding or on which it is collaborating with others to address significant community health needs. It summarizes actions taken in FY25 and planned activities for FY26, with statements on impacts and community collaboration. Program Highlights provide additional detail on select programs.

Planned activities are consistent with current significant needs and the hospital's mission and capabilities. The hospital may amend the plan as circumstances warrant, such as changes in community needs or resources to address them.

Creating the Community Benefit Plan

The hospital is dedicated to improving community health and delivering community benefit with the engagement of its management team, board, clinicians and staff, and in collaboration with community partners.

Hospital and health system participants included...

- Care Coordination
- Clinicians, Nurses
- Communications / Marketing
- Education
- Foundation / Philanthropy
- Health Equity Liaison
- Mission
- Social Work
- Strategy / Planning
- Quality



The Mercy Community Board is composed of community members who provide stewardship and direction for the hospital as a community resource (see Appendix A). These parties review community benefit plans and program updates prepared by the hospital's community health manager and other staff.

Mercy Medical Center's community health programs reflect our commitment to improve the quality of life in the community we serve. The Community Board, Mercy Administration along with key management staff provides oversight and policy guidance for all charitable services and activities supported by the hospital. The people on these committees and boards represent health professionals as well as community residents. This group reviews the CHNA

to determine that MMC's community health programs are addressing identified needs. The community Board meets monthly. Identified needs are also reviewed by the Mercy Foundation to determine their philanthropic strategies.

Community Health Core Strategies


The hospital intends that program activities to help address significant community health needs reflect a strategic use of resources. CommonSpirit Health has established three community health improvement core strategies to help ensure that program activities overall address strategic aims while meeting locally-identified needs.

- Extend the care continuum by aligning and integrating clinical and community-based interventions.
- Implement and sustain evidence-based health improvement program initiatives.
- Strengthen community capacity to achieve equitable health and well-being.




Report and Plan by Health Need


The tables below present strategies and program activities the hospital has delivered or intends to deliver to help address significant health needs identified in the community health needs assessment. They are organized by health need and include statements of goals and anticipated impact, and any collaboration with other organizations in their delivery.

 Health Need: Access to Healthcare Services			
Strategy or Program	Summary Description	Active FY25	Planned FY26
Community Health Improvement Grants Program	Grant funds are awarded to nonprofit organizations to increase access to health care and preventive care.	X	X
Family Practice Clinic	This clinic is affiliated with the UC Davis Residency program and provides primary care and preventive services. It primarily serves Medi-Cal and underinsured patients. There also is a Mobile Health Clinic for outreach to underserved populations.	X	X
Financial Assistance Program	Financial assistance is provided to uninsured and underinsured patients.	X	X
General Medicine Clinic	This clinic provides rotating specialty physicians who serve the underinsured, working poor, and patients with Medi-Cal coverage.	X	X
Kids Care Pediatric Clinic	This pediatric and obstetric clinic primarily serves managed Medi-Cal and underinsured patients.	X	X
Goal and Impact: Increase access to health care for the medically underserved and reduce barriers to care. Increase the number of adults who get recommended preventive health care.			

Collaborators: Merced Faculty Associates, UC Davis Residency Program, Livingston Community Health Clinic, Central CA Alliance for Health, Merced County Continuum of Care, The Salvation Army, Collaborative Planning and Implementation Merced (CalAIM), Merced County Department of Public Health

 Health Need: Chronic Diseases			
Strategy or Program	Summary Description	Active FY25	Planned FY26
Accessible Yoga	Provided a modified yoga program tailored to cancer patients' physical abilities.	X	X
American Cancer Society Collaborative	The Collaborative Action Plan is a partnership with ACS and the cancer center. Provided educational materials and the Reach to Recovery program.	X	X
Asthma Awareness and Education Outreach	Partnered with community groups such as the Tobacco Coalition, Asthma Coalition and other health collaboratives to raise asthma awareness. Provided education via health presentations, health screening events, and health fairs.	X	X
Asthma Self-Management Program	This workshop provided tools, knowledge and resources to better manage asthma.	X	X
Cancer Support Group	This support group was open to any person affected by cancer; patient or family member, regardless of where they received treatment.	X	X
Diabetes Education and Empowerment Program (DEEP)	An evidenced-based self-management program that helped participants take control of their diabetes and reduce the risk of complications. This program focused on low-income, racial and ethnic minority populations. Through surveys and self-reports there were	X	X

	positive outcomes in the reduction of hospitalizations and A1c numbers among program participants.		
Diabetes Support Group and Educational Program	Weekly diabetes education sessions were provided via Zoom, phone, and in-person in English and Spanish. These sessions provided education and the opportunity for participants to offer each other support.	X	X
Kindness Box Program	Food box program provided touchless food delivery front door service for cancer patients and their families.	X	X
Mercy Cancer Center	Provided oncology care to the community. Partnered with the American Cancer Society for outreach programs and support services. Collaborated within the community to provide cancer screening events. Provided cancer patients with access to synthetic wigs and head coverings at no cost.	X	X
Stroke Support and Resource Class	Monthly meetings offered individuals information on preventing strokes, coping with disabilities and changes after a stroke, and support for caregivers.	X	X
Tobacco Cessation Clinics	Through the American Lung Association's Freedom from Smoking Clinics, provided clinic sessions to prepare community members to quit tobacco use	X	X
Transportation Program	A comprehensive assistance program assisted cancer patients with navigating benefits, resources and other programs to secure transportation for treatment.	X	X
Goal and Impact: Increased compliance with chronic disease management recommendations.			
Collaborators: Community collaboratives, American Heart Association, American Cancer Society, Tobacco Coalition, Merced County Food Bank, Asthma Coalition, American Lung Association, Centers for Disease Control, walking groups, senior groups, Merced County Department of Public Health, Mercy Medical Center Foundation			

 Health Need: Birth Indicators			
Strategy or Program	Summary Description	Active FY25	Planned FY26
Baby Café	Childbirth Educators and Lactation Consultants from Mercy Medical Center and Merced County WIC facilitate this support group. New and experienced moms help each other with challenges they encounter with breastfeeding and postpartum depression.	X	X
California Lactation Coalition and the Merced County Breastfeeding Network	Hospital staff participate in collaborative efforts to increase breastfeeding.	X	X
Community Grants Program	Grant funds are awarded to nonprofit organizations to improve birth outcomes.	X	X
Kids Care Pediatric Clinic	This pediatric and obstetric clinic primarily serves managed Medi-Cal and underinsured patients.	X	X
Maternal and Infant Care Education	Pregnant women and their families are provided with educational opportunities and resources to improve birth outcomes. Childbirth education classes and postpartum education included.	X	X
Prenatal Yoga	Incorporates stretching, mental centering and focused breathing to reduce stress, improve sleep and improve flexibility and strength.	X	X
Goal and Impact: Improve maternal and infant health outcomes. Increase breastfeeding among infants.			
Collaborators: Family Practice clinics, Merced County WIC, California Lactation Coalition, Merced County Breastfeeding Network, Lactation Action Group, California Breastfeeding Committee, Merced County Department of Public Health, First 5 of Merced County, All Dads Matter, All Moms Matter, Merced Maternal Wellness Coalition			



Health Need: Overweight and Obesity, Healthy Eating and Active Living

Strategy or Program	Summary Description	Active FY25	Planned FY26
Community Health Improvement Grants Program	Grant funds are awarded to nonprofit organizations to increase physical activity and provide access to nutritious food.	X	X
Community Exercise Programs	Community exercise classes are offered for adults of all fitness levels to increase balance, strengthen muscles, maintain flexibility and relieve stress. May include yoga, Zumba, walking classes, and Tai Chi	X	X
Goal and Impact: Improved healthy eating and physical activity behaviors.			
Collaborators: Food Policy Council of Merced County, Kids Discovery Station, Merced County Department of Public Health, City of Merced Parks and Recreation, Merced Senior Community Center			

Community Health Improvement Grants Program

One important way the hospital helps to address community health needs is by awarding restricted financial grants to non-profit organizations working to improve health status and quality of life. Grant funds are used to deliver services and strengthen service systems, to improve the health and well-being of vulnerable and underserved populations related to CHNA priorities.

In FY25, the hospital awarded the grants below totaling \$138,494. Some projects also may be described elsewhere in this report.

Grant Recipient	Project Name	Health Needs Addressed (from 2022 CHNA)	Amount
ACE Overcomers of Merced County	Building Healthy Life Skills Homeless Education & Support Program	Social Determinants of Health Housing and Homelessness	\$55,100
Community Initiatives for Collective Impact	Family Nutrition Hubs	Social Determinants of Health Preventive Practices	\$53,394
The Salvation Army	The Salvation Army Merced Corps	Access to Care/Services Housing / Homelessness	\$30,000

The hospital also made other financial grants for community benefit in FY25.

- **Golden Valley Health Centers:** \$480,000. Grants made to this Federally-Qualified Health Center to assist in recruiting providers to increase access to primary care for poor and vulnerable populations.
- **Merced College:** \$377,130. Grants to the local community college to support the local registered nurse training program. The college is required to use the funds to retain a program manager and faculty professors.

Program Highlights

The following pages describe a sampling of programs and initiatives listed above in additional detail, illustrating the work undertaken to help address significant community health needs.



Access to Healthcare Services

Significant Health Needs Addressed	Access to Healthcare to underserved populations <ul style="list-style-type: none">• Taking healthcare to the underserved and meet their needs
Program Description	The mobile care clinic provides accessible medical services with primary focus on caring for individuals at risk of or experiencing homelessness as well as others who face barriers to traditional healthcare. In addition to serving unhoused populations, the clinic also serves schools and at community events. Our goal is to meet people where they are.
Population Served	The underserved community of Merced County including the homeless population, migrant workers, and those with transportation difficulties.
Program Goal / Anticipated Impact	Our services included primary medical care, immunizations, and wellness outreach. Recently, we have expanded efforts in immunization delivery and strengthened our role in community engagement. The Mobile Care Clinic also plays a vital role in the recuperative care process, partnering closely with the hospital discharge planning team and local shelters to provide visits that support patients in obtaining authorization for their ongoing recuperative care needs.

FY 2025 Report

Activities Summary	In FY2025 the mobile unit was open to serve the community 190 days and saw a total of 985 patients
Performance / Impact	Each community member that engages with the mobile unit is one less patient that will seek services in the emergency room. Not all individuals who engage with the mobile unit team will register to be seen. Some individuals only request assistance with social support such as transportation, food or housing.
Hospital's Contribution / Program Expense	The Mobile Clinic is staffed with Medical Providers (NP, LVN or RN), social worker, security, registration staff, social worker and community health workers. The project is Grant funded

FY 2026 Plan



Access to Healthcare Services

Program Goal / Anticipated Impact	To increase the amount of patients served in the community by the Mobile Clinic.
Planned Activities	<ul style="list-style-type: none">• Community Outreach at events throughout the community. Look for new areas to serve. Present at the Lao Boat Festival, Diwali Night, Backpack handout, and other community events.• Create an ECM (Enhanced Care Management) program to serve the needs of the whole person.



Living Well with Diabetes

Significant Health Needs Addressed	Diabetes
Program Description	A multi-purpose educational and support group that teaches strategies for understanding, managing and living with diabetes. It features medical professional guest speakers, interactive educational experiences and develops individual action plans. The program is offered in English and Spanish.
Population Served	All those affected by diabetes or at risk of diabetes.
Program Goal / Anticipated Impact	Participants in the monthly diabetes classes learn how to better manage their diabetes. Our Community Health Workers review discharges and refer patients to the program. Working through the Unite Us platform, referrals are reviewed and patients are enrolled in the available English or Spanish program.

FY 2025 Report

Activities Summary	Worked to increase use of the Unite Us platform for referrals from all aspects of the community.
Performance / Impact	Increase attendance in Diabetes education.
Hospital's Contribution / Program Expense	MMC contributed \$112,419 for this community program



Living Well with Diabetes

Program Goal / Anticipated Impact	Continue to offer educational programs weekly through Zoom, in-person, or one-on-one telephone sessions. Email and Mail check-ins. The Program provides specific information on foot care, eye care, blood sugar monitoring, A1c tracking and meal planning basics. Continue collaboration with private physicians to increase awareness of the programs. Strengthen referrals to the diabetes programs via the Connected Community Network (CCN. Community Health Workers screen discharges and refer to the program through Unite Us.
Planned Activities	Continue to increase the outreach to community healthcare providers and community-based organizations for referrals to the program.



Mercy Cancer Center Community Program

Significant Health Needs Addressed	Cancer
Program Description	Community Programs are funded through the Mercy Foundation as well as the Cancer Center's budget. Programs provide information about cancer, education, support as well as provides staff and location for the programs and snacks.
Population Served	Those affected by cancer
Program Goal / Anticipated Impact	To address the need in the community for supportive cancer programs, education and resources for cancer patients, their families and/or caregivers.

FY 2025 Report

Activities Summary	<ul style="list-style-type: none"> • Monthly support group with related activities • Wig bank • Cancer prevention education to school students within the local school district • Education to the general population on cancer risk factors and screening recommendations • Social support services support for food insecurity, emotional, social, and transportation barriers
--------------------	---



Mercy Cancer Center Community Program

	<ul style="list-style-type: none"> • Nurse Navigation for oral chemotherapy support and education, bridging gaps between providers, support to patients and caregivers, low dose CT patients birads 3 and 4, and incidental nodules. • Breast cancer screening event
Performance / Impact	Members of the community to better understand cancer and cancer treatments. Increase cancer screening and identify cancer at earlier stages. YTD there have been 20 incidental findings identified and 1 confirmed case of cancer with a positive diagnosis. Breast cancer screening event resulted in 53 mammograms and 4 abnormalities identified.
Hospital's Contribution / Program Expense	MMC contributed \$47,301 for this community program
Program Goal / Anticipated Impact	To address the needs in the community for supportive programs, education and resources for cancer patients, their families and/or support persons, promote early screening and early cancer detection, and assist patients navigate the barriers of the healthcare system.
Planned Activities	<ul style="list-style-type: none"> • Continue and increase participation in supportive care programs such as support groups and the wig bank. • Cancer prevention events to include education on cancer risk factors and screening recommendations • Cancer screening event • Social support services to address food insecurity, emotional, social, and transportation barriers • Nurse Navigation for oral chemotherapy support and education, bridging gaps between providers, support to patients and caregivers, patients that are at high risk for hospitalizations, and expand lung navigation and incidental nodule navigation.



Childbirth Preparation Programs

Significant Health Needs Addressed	Family Planning - Infant Health
------------------------------------	---------------------------------



Childbirth Preparation Programs

Program Description	Family planning and maternal and infant health programs will offer support of pregnancies occurring at the healthiest time of a woman's life. Provide programs, education and resources that support families in the planning and spacing of their children. Provide the support and resources to improve maternal and infant health outcomes in the community we serve.
Population Served	Families planning and expecting to welcome a newborn
Program Goal / Anticipated Impact	Expectant women will be prepared for their birthing journey and the arrival of their child. Mother, baby, families, and support persons will experience a high level of patient satisfaction.

FY 2025 Report

Activities Summary	
Performance / Impact	Expectant mothers and their support persons benefited and experienced a better childbirth experience because of their participation in the childbirth preparation classes. Resources were available for any mom that needed postpartum depression help and support was offered to all moms on baby health and breast feeding.
Hospital's Contribution / Program Expense	MMC contributed \$46498 for this community program

Program Goal / Anticipated Impact	Expectant women will be prepared for their birthing journey and the arrival of their child. Mother, baby, families and support persons will experience a high level of patient satisfaction.
Planned Activities	<ul style="list-style-type: none">• Childbirth Preparation Classes• Baby Cafe- a breast feeding support group• Nursing nook at Mercy Outpatient Center• Stork Tours in the Family Birthing Center• Establish a drop-in breast feeding program in the rural health clinics.

Other Community Health and Community Building Programs

The hospital delivers community programs, services and non-quantifiable benefits in addition to those described elsewhere in this report. Like those programs and initiatives, the ones below are a reflection of the hospital's mission and its commitment to improving community health and well-being.

- Mercy Medical Center sponsors the annual Merced Walk to End Alzheimer's. In addition, MMC staff increased awareness by attending committee meetings, raising funds and walking in the event.
- Mercy Medical Center supports and is a member of the following:
 - Merced County Hispanic Chamber of Commerce
 - Merced Rotary
 - Merced Firefighters Scholar Board
 - Tobacco Coalition
 - Merced County Bi-National Health Week Committee
 - Livingston Community Health Board of Directors
 - Central CA Alliance for Health
 - Merced County Continuum of Care
 - Food Policy Council of Merced County
 - The Salvation Army Advisory Board
 - ACE's - Informed Network of Care
 - Merced Freedom Coalition
 - Collaborative Planning and Implementation Merced (Cal-AIM)
 - Head Start Health Services Advisory Committee (HSAC)
 - California Breastfeeding Committee
 - Lactation Action Group
 - Atwater Caring for Kids Community COuncil Drug Store Project
 - Merced Breastfeeding Network
 - Merced Mariposa Healthcare Preparedness Coalition
- Working with UC Merced and the "We Will" Volunteer program to guide students into the healthcare field.
- Community Back to School Backpack event handing out backpacks and school supplies to the community children.

Economic Value of Community Benefit

The economic value of all community benefits is reported at cost. Patient financial assistance (charity care) reported here is as reported to the Department of Health Care Access and Information in Hospital Annual Financial Disclosure Reports, as required by Assembly Bill 204. The community benefit of Medicaid, other means-tested programs and Medicare is calculated using a cost-to-charge ratio to determine costs, minus revenue received for providing that care. Medicare reported here excludes Medicare reported as a part of Graduate Medical Education.

Other net community benefit expenses are calculated using a cost accounting methodology. Restricted offsetting revenue for a given activity, where applicable, is subtracted from total expenses to determine net benefit in dollars.

Financial Assistance and Means-Tested Government Programs	Vulnerable Population	Broader Community	Total
Traditional Charity Care	\$6,598,766		\$6,598,766
Medi-Cal	\$40,627,638		\$40,627,638
Other Means-Tested Government (Indigent Care)	\$0		\$0
Sum Financial Assistance and Means-Tested Government Programs	\$47,226,404		\$47,226,404
Other Benefits			
Community Health Improvement Services	\$1,520,657	\$468,144	\$1,988,801
Community Benefit Operations	\$931	\$14,131	\$15,062
Health Professions Education	\$0	\$7,251,310	\$7,251,310
Subsidized Health Services	\$0	\$0	\$0
Research	\$0	\$0	\$0
Cash and In-Kind Contributions for Community Benefit	\$1,149,508	\$377,130	\$1,526,638
Other Community Benefits	\$0	\$0	\$0
Total Other Benefits	\$2,671,096	\$8,110,715	\$10,781,811
Community Benefits Spending			
Total Community Benefits	\$49,897,500	\$8,110,715	\$58,008,215
Medicare (non-IRS)	\$10,959,470		\$10,959,470
Total Community Benefits with Medicare	\$60,856,970	\$8,110,715	\$68,967,685

Hospital Board and Committee Rosters

Hospital Administration

A six-member senior management team operates the hospital administration

- Dale Johns, President
- Scott Banks, Chief Financial Officer
- Maranda Hall, Chief Nursing Executive
- Pierre Scales, M.D., Chief Medical Officer
- Cathan Riding, Chief Operations Officer
- Kassey Mosher, Chief Philanthropy Officer

Community Board

The board supports the mission, vision, values, charitable and philanthropic goals of the hospital and Dignity Health, a member of CommonSpirit Health. Members are regarded in their community as respected and knowledgeable in their field, are contributing citizens in their community and are knowledgeable about or willing to become educated about hospital and healthcare matters.

- Garth Pecchenino - Vice President of Technical Service, QK inc. *Board Chair*
- Christopher Vitelli, Superintendent/ President Merced College
- Gabriel Garcia-Diaz, MD - Orthopedic Spine Surgeon, OrthoSpine Advanced Health, Inc
- Sima Asadi, MD - Pediatrician, University Pediatric Center
- Juan Sánchez-Muñoz - Chancellor, University of California Merced
- Robert Dulina - Manager/ Senior Loan Officer, E Mortgage Capital, Inc
- Sr. Catherine Murray - Leadership Team/ First Councilor, Dominican Sisters of San Rafael
- Sunit Patel, MD - Pulmonologist, Merced Lung & Sleep
- Dale Johns - Hospital President, Mercy Medical Center (Ex-Officio)